

CICLO BÁSICO MEDICINA

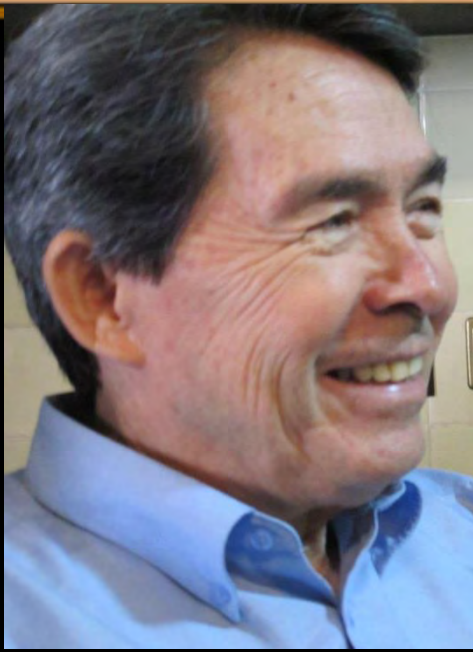
PRIMER AÑO . PRIMER SEMESTRE

HISTOLOGÍA I

Primera videoconferencia Orientadora

Tema:

Métodos de estudio en Histología.
Célula Eucariota. Ciclo Celular.



Profesor: Dr. Andrés Dovale Borjas

Profesor Titular de Histología

Asesora:

MSc. Belén Z. Iglesias Ramírez

Profesora Auxiliar

Jefa del Departamento de Histología

ICBP "Victoria de Girón"



OBJETIVO:

EXPLICAR LOS MÉTODOS DE ESTUDIO EMPLEADOS EN HISTOLOGÍA Y LAS CARACTERÍSTICAS MORFOFUNCIONALES GENERALES DE LAS CÉLULAS EUCARIOTAS Y LAS DIFERENTES ETAPAS DEL CICLO CELULAR, UTILIZANDO LOS MODELOS CELULARES, ESQUEMAS, FOTOMICROGRAFÍAS ÓPTICAS Y ELECTRÓNICAS Y LÁMINAS HISTOLÓGICAS

SUMARIO:

- A. Métodos de estudio empleados en Histología.**
- B. Características morfofuncionales generales de la célula eucariota.**
- C. Características morfofuncionales de los organitos e inclusiones citoplasmáticas.**
- D. Características morfofuncionales del núcleo celular.**
- E. Ciclo celular. Etapas. División celular.**

Histología

- **Células**
- **Tejidos**
- **Órganos**

Histología I

Células

Tejidos

Histología II

Sistema nervioso

Sistema endocrino

Sistema reproductor

Histología III

Sangre y hematopoyético

Sistema circulatorio

Sistema inmune

Sistema respiratorio

Sistema urinario

Sistema digestivo

Sistema tegumentario

Histología I

3 videoconferencias orientadoras

8 clases taller

3 clases prácticas

3 seminarios

CUERPO HUMANO



Sistemas



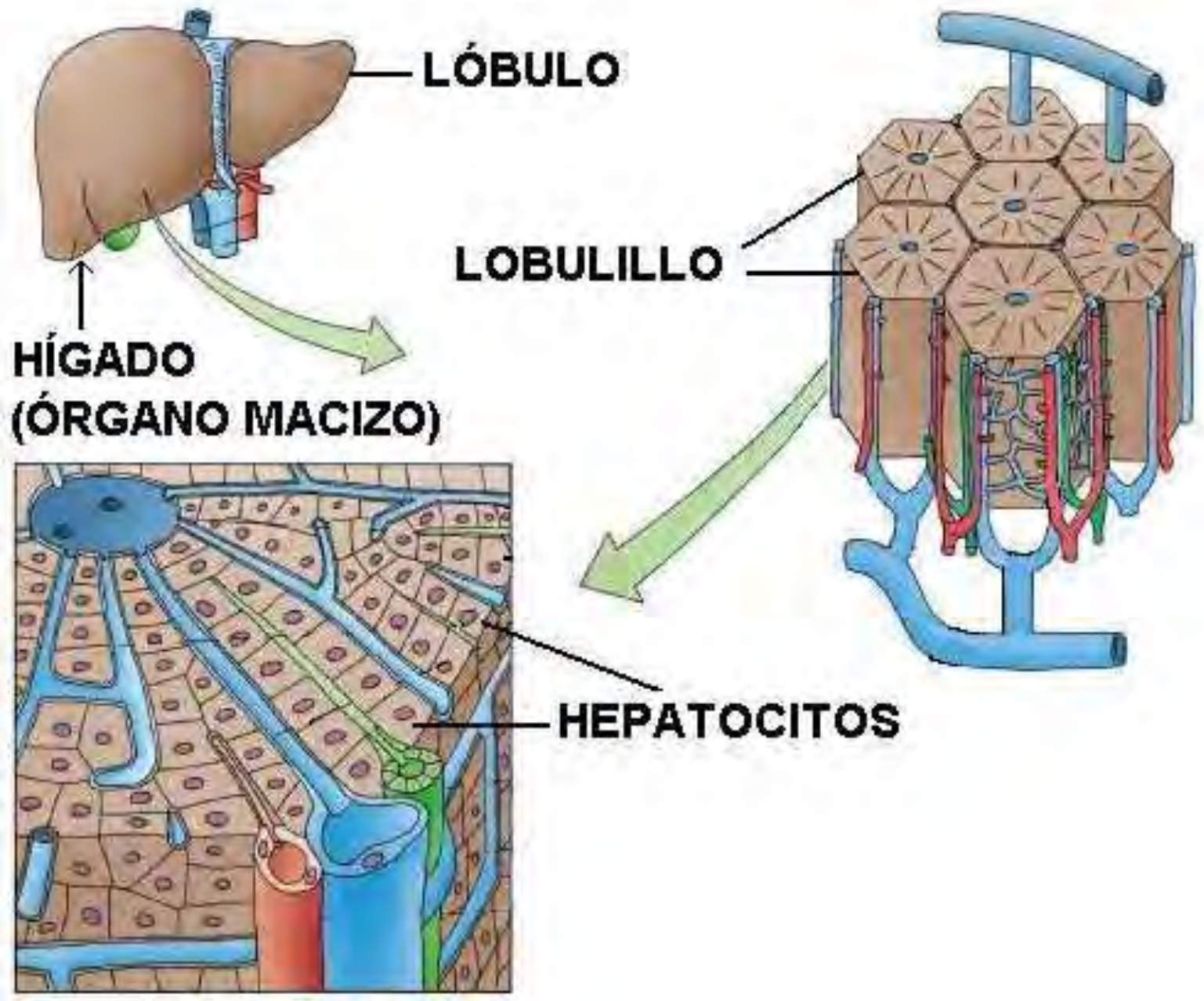
Órganos



Tejidos

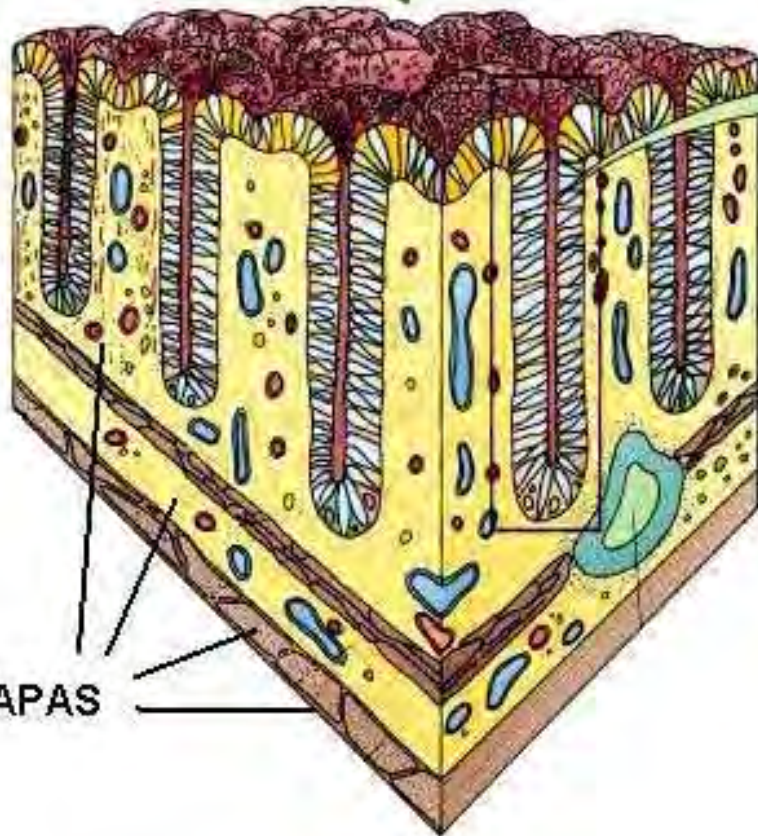


Células

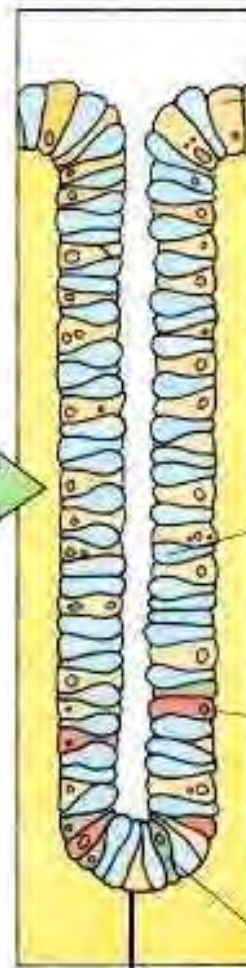




**INTESTINO GRUESO
(ÓRGANO TUBULAR)**



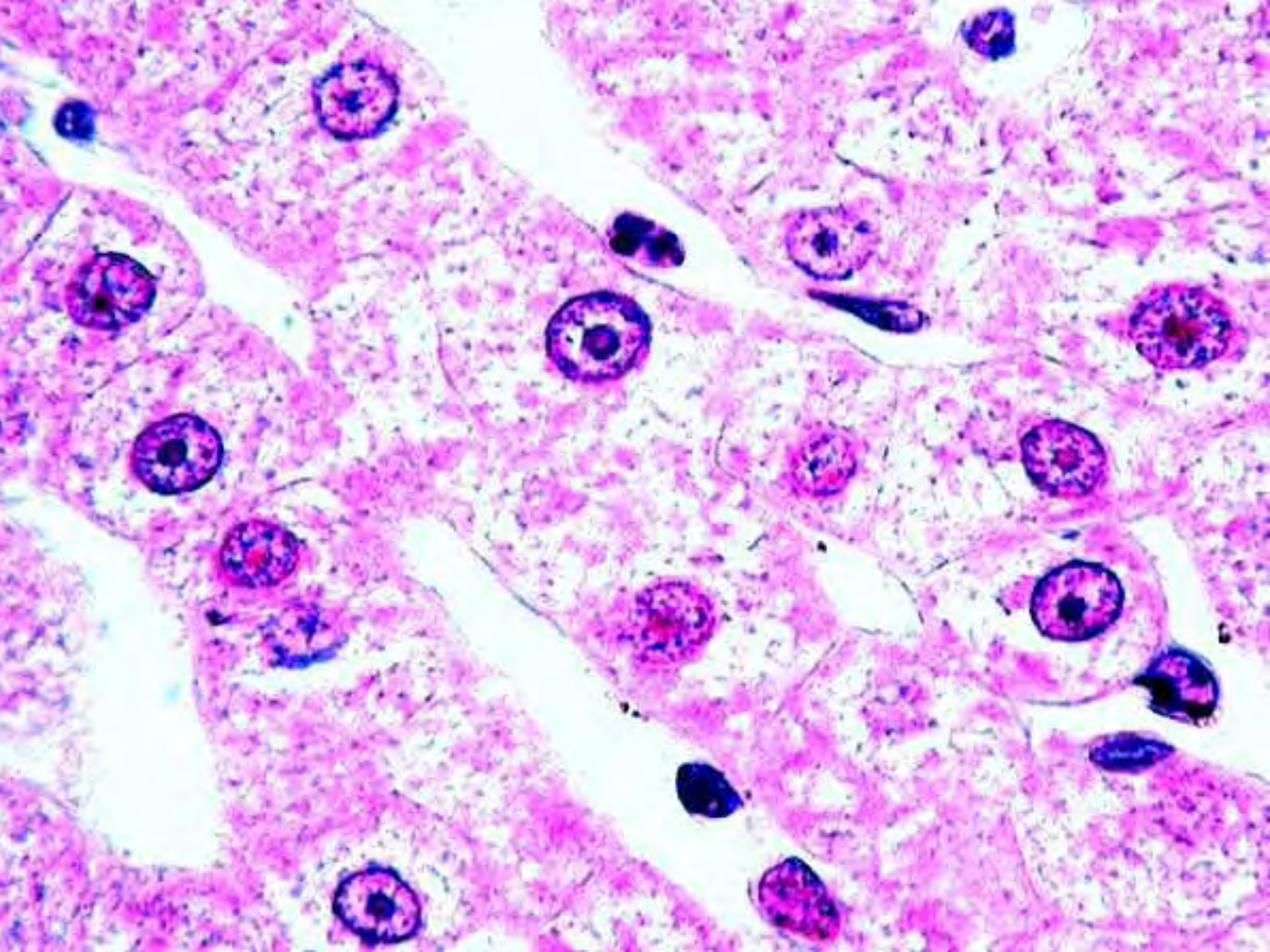
CAPAS



GLÁNDULA



**CÉLULAS
ESPECIALIZADAS**



Tejidos

Células

Matriz Extracelular

Líquido tisular

**Tejidos
básicos**

Epitelial

Conectivo o conjuntivo

Muscular

Nervioso

**C
É
L
U
L
A**

Núcleo

Envoltura nuclear

Cromatina

Nucléolo

Nucleoplasma (Matriz nuclear)

Citoplasma

Organitos

Membranosos

No membranosos

Inclusiones

Alimentos

Pigmentos

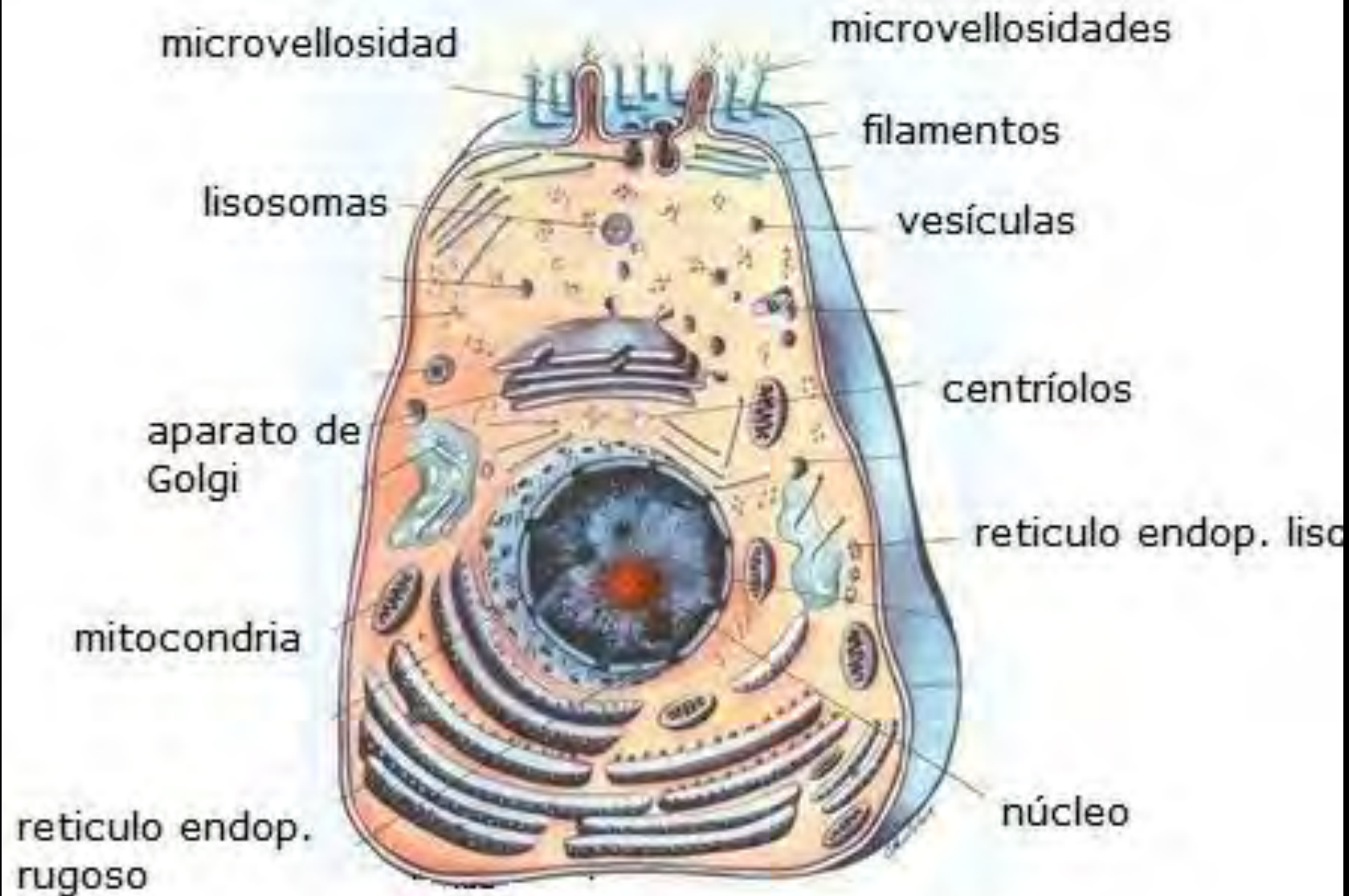
Matriz citoplasmática

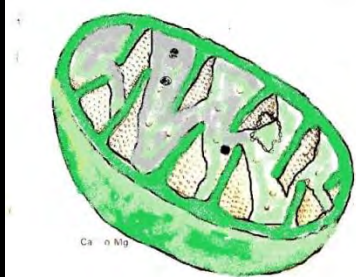
**ORGANITOS
MEMBRANOSOS**

**Membrana plasmática
Mitocondrias
Retículo endoplasmático rugoso
Retículo endoplasmático liso
Aparato o complejo de Golgi
Lisosomas
Peroxisomas**

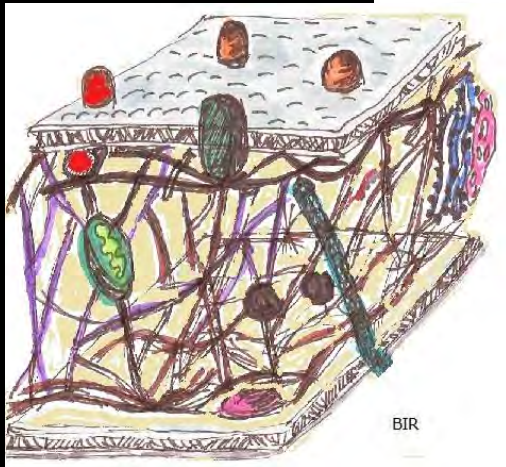
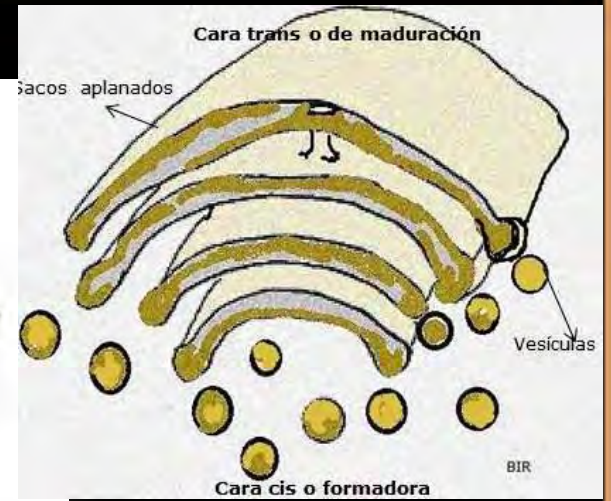
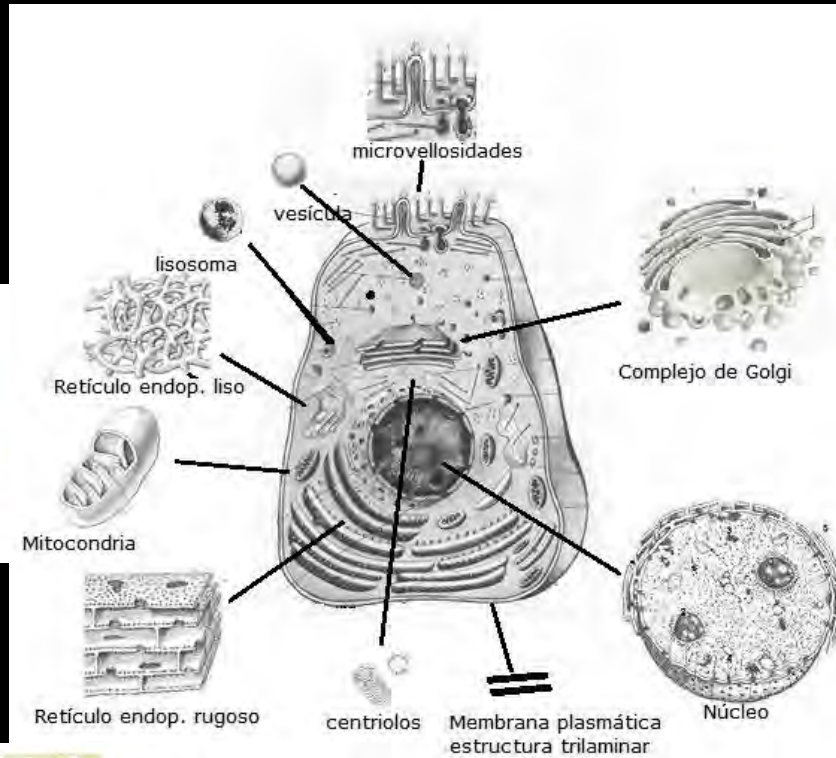
**ORGANITOS NO
MEMBRANOSOS**

**Ribosomas
Centriolos
Microtúbulos
Microfilamentos
Filamentos intermedios
Cilios y flagelos**

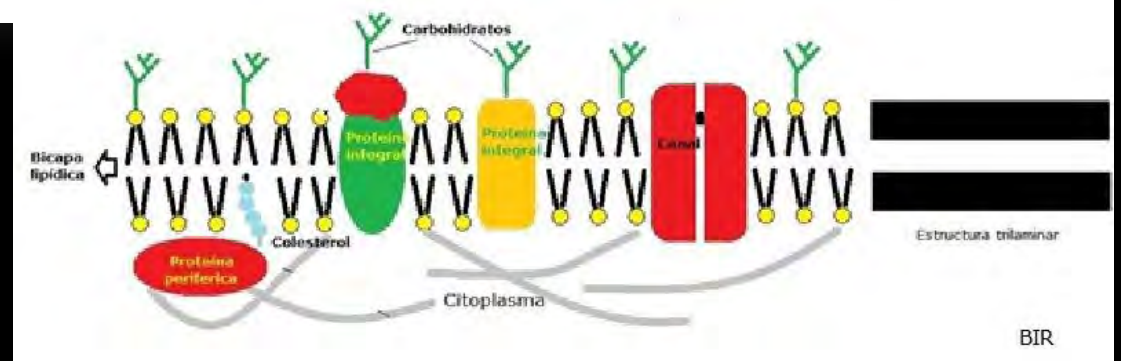


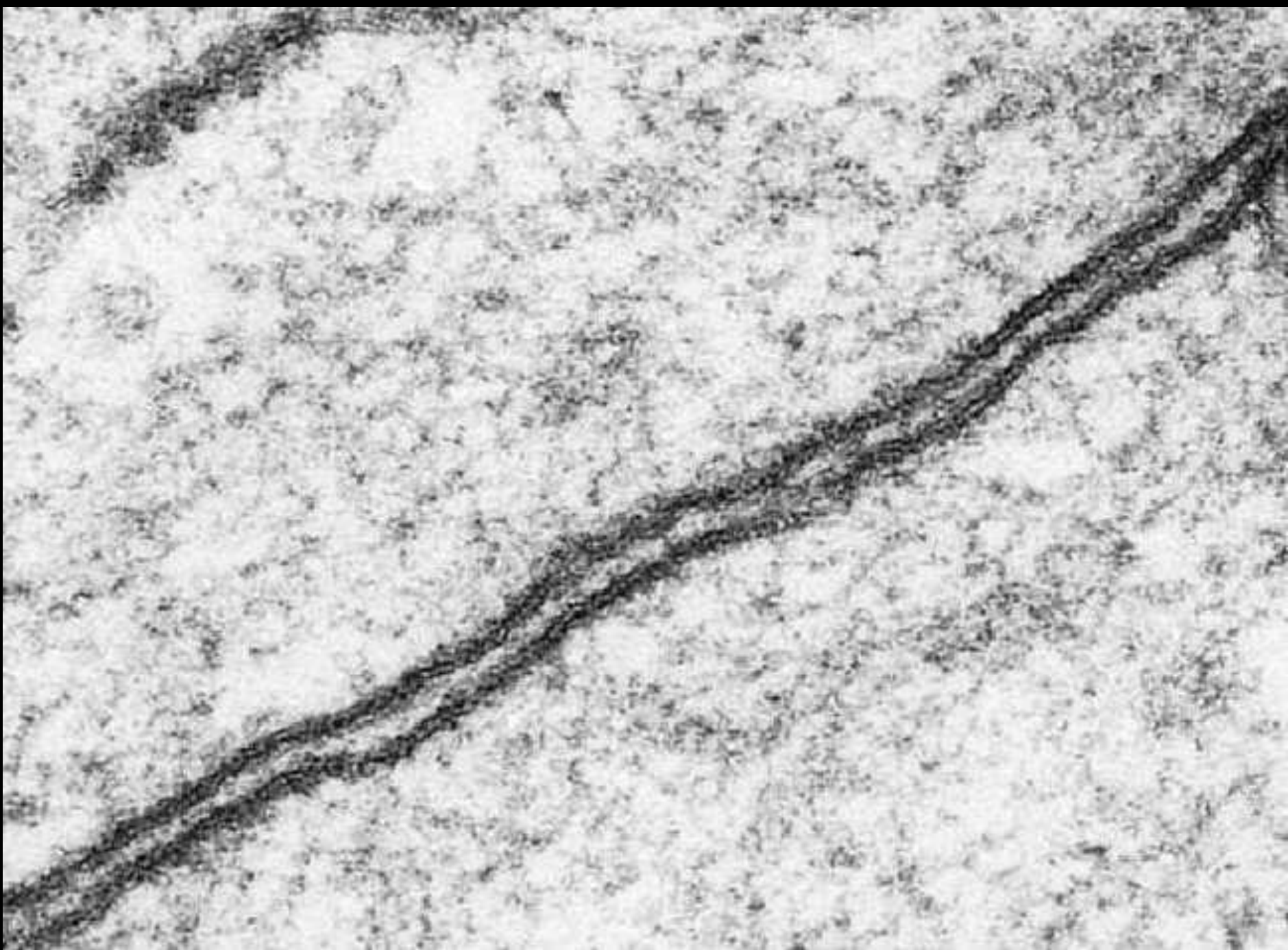


Ca²⁺ Mg

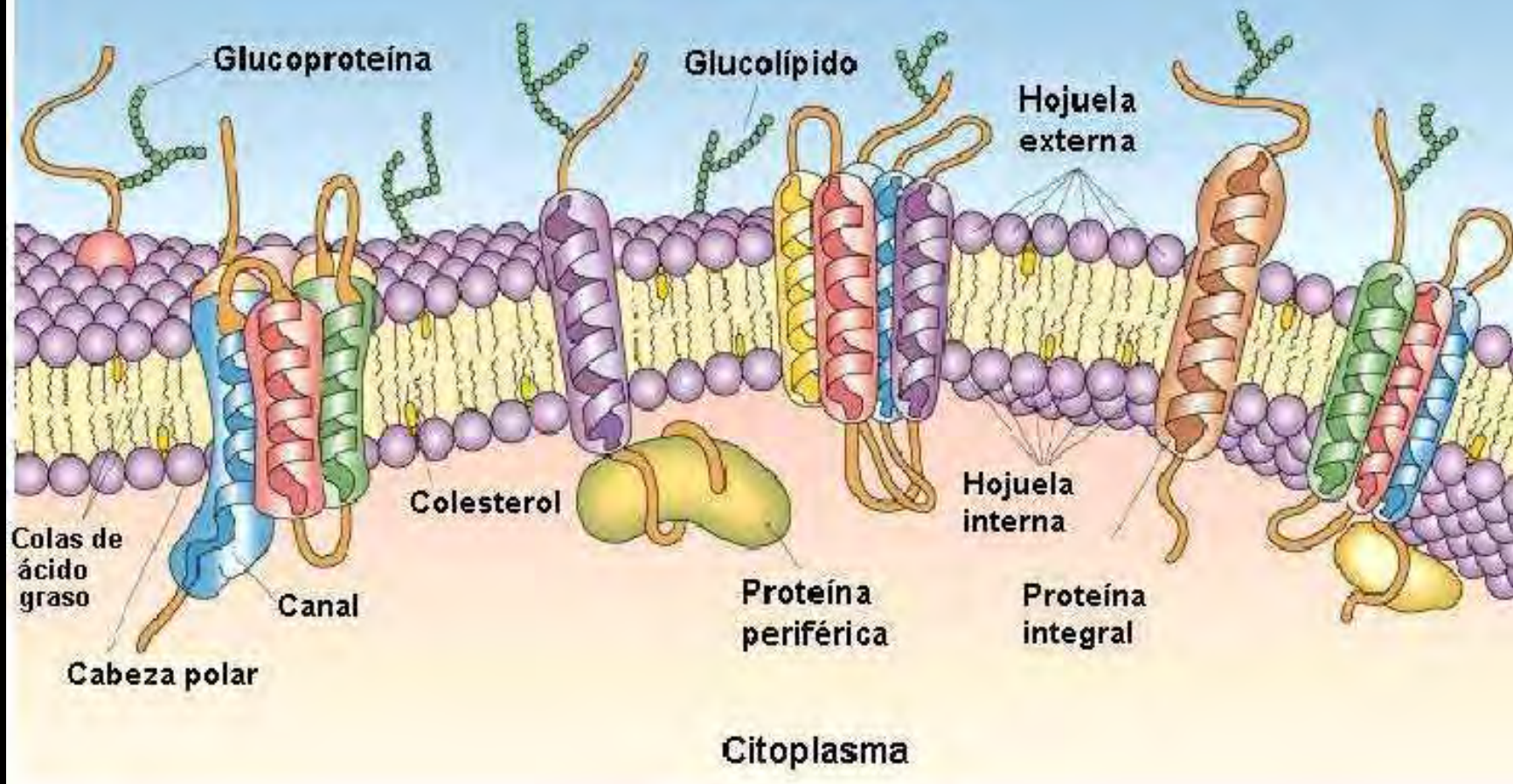


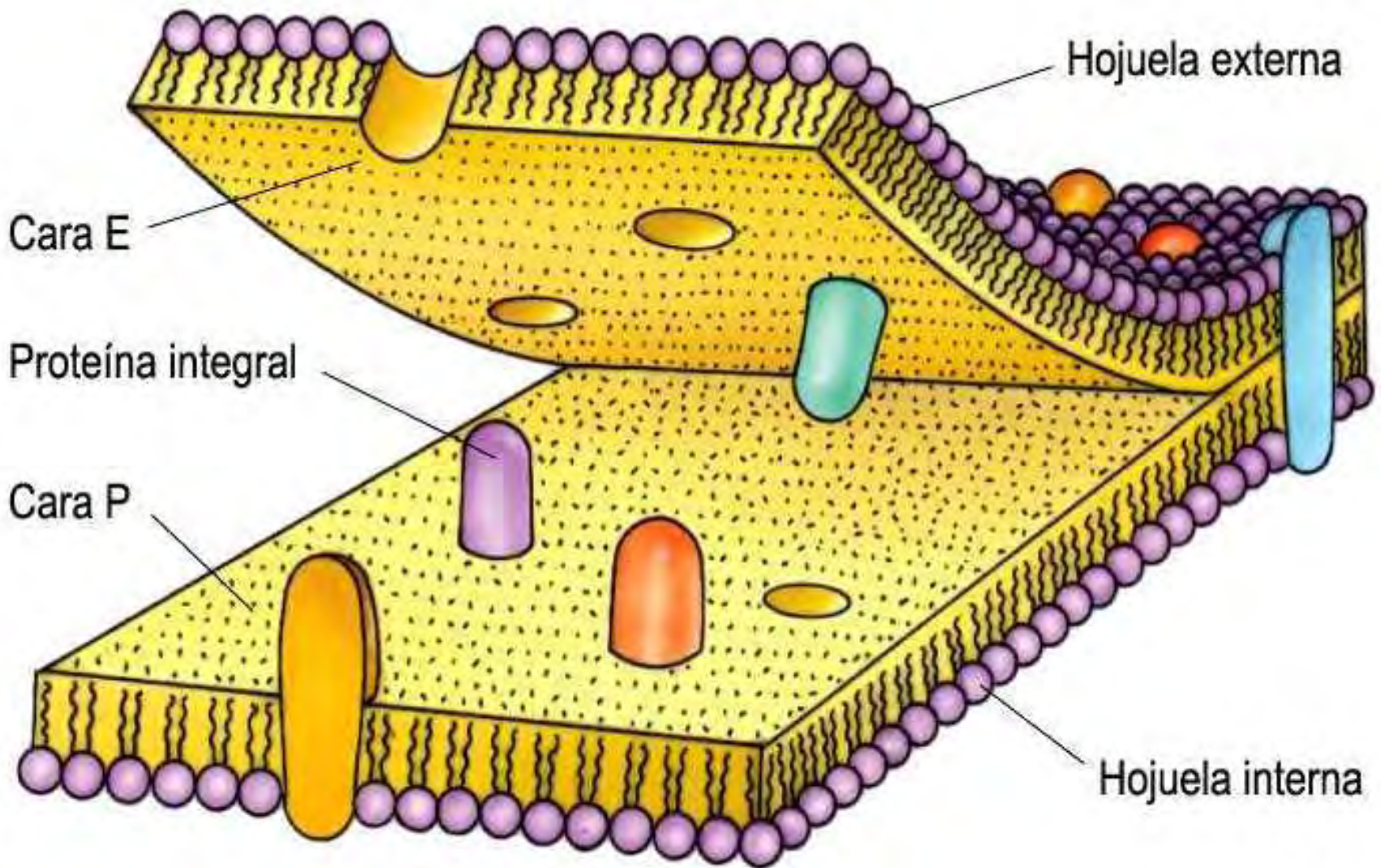
BIR



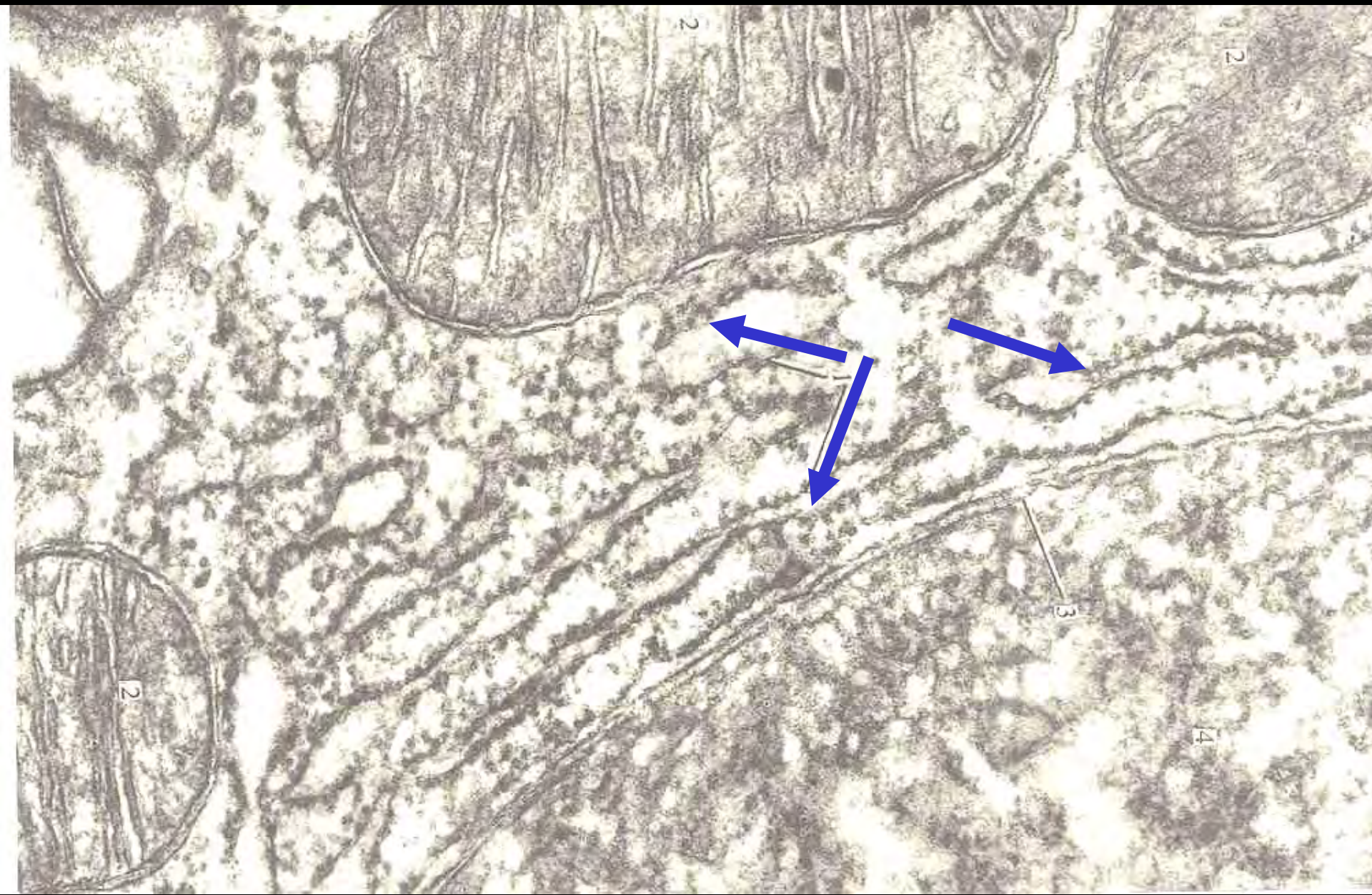


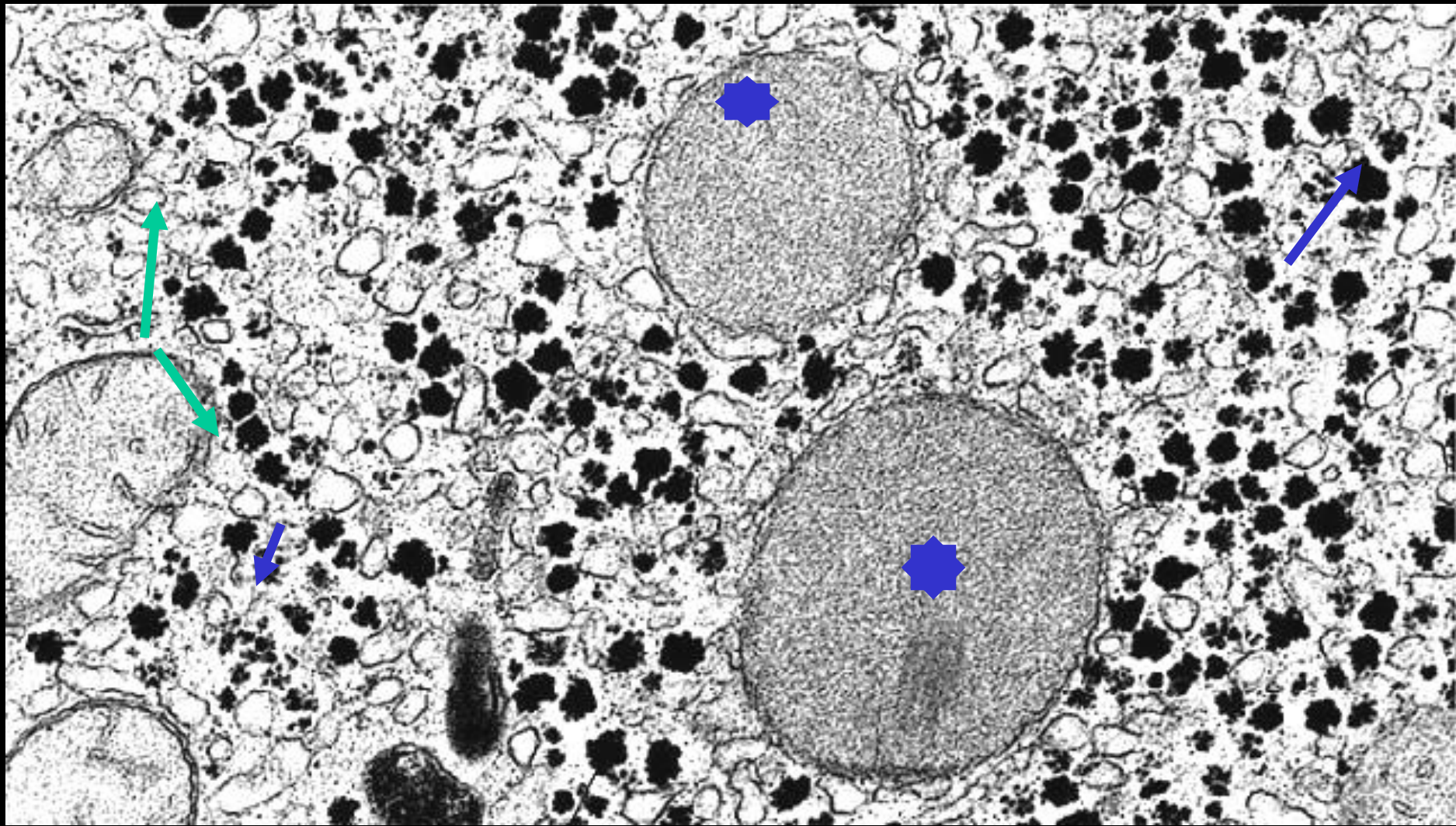
Espacio extracelular

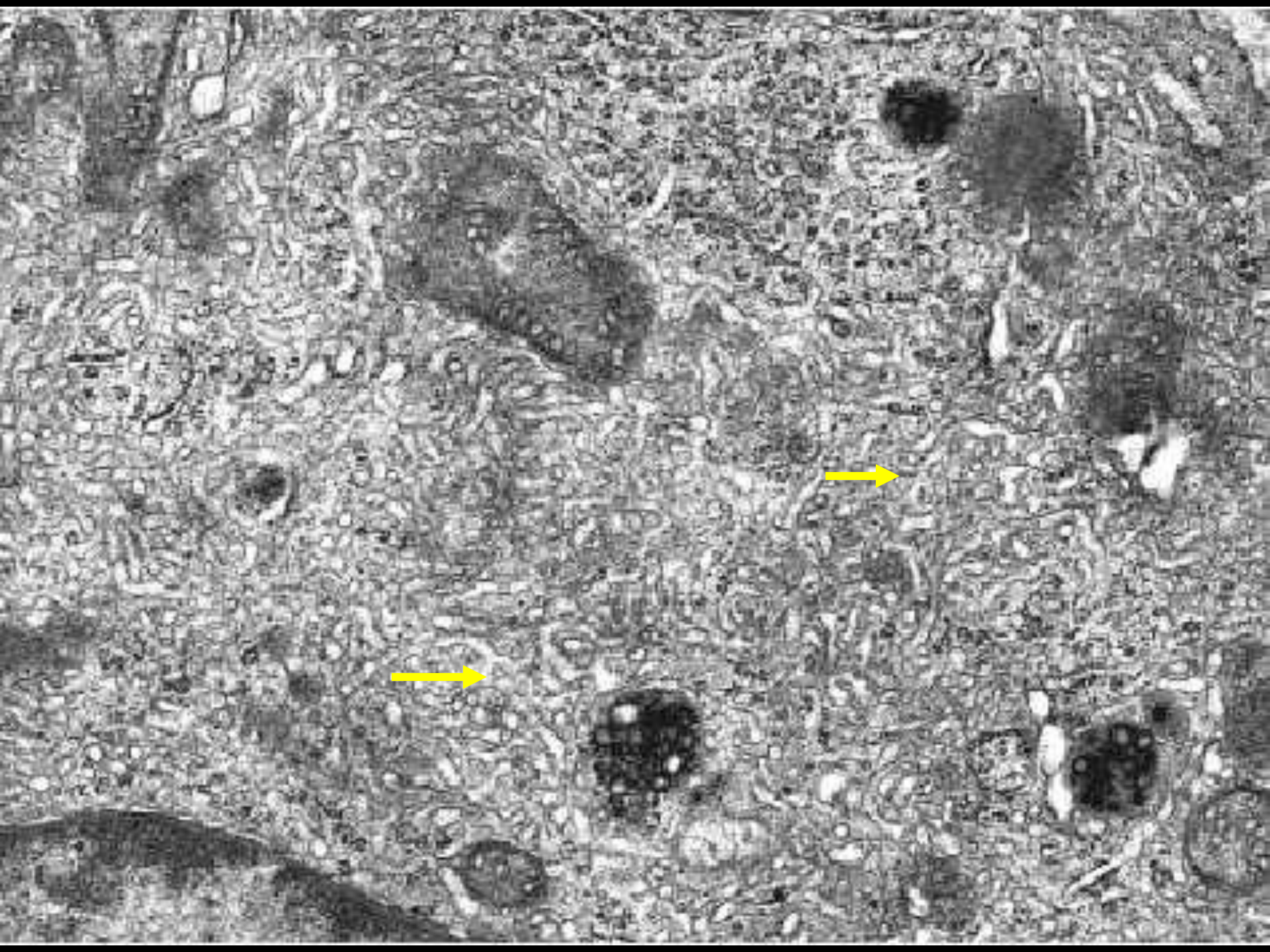


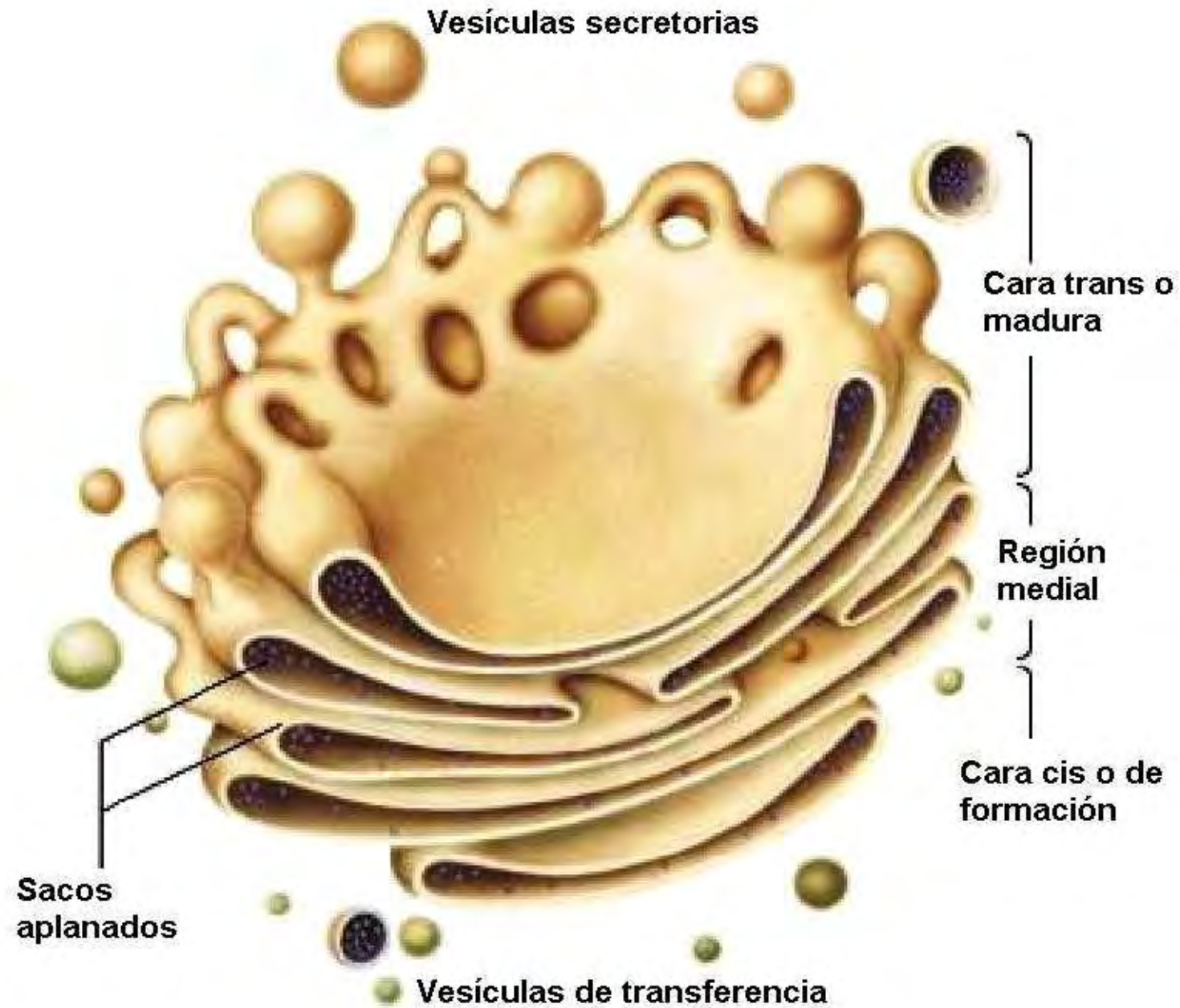


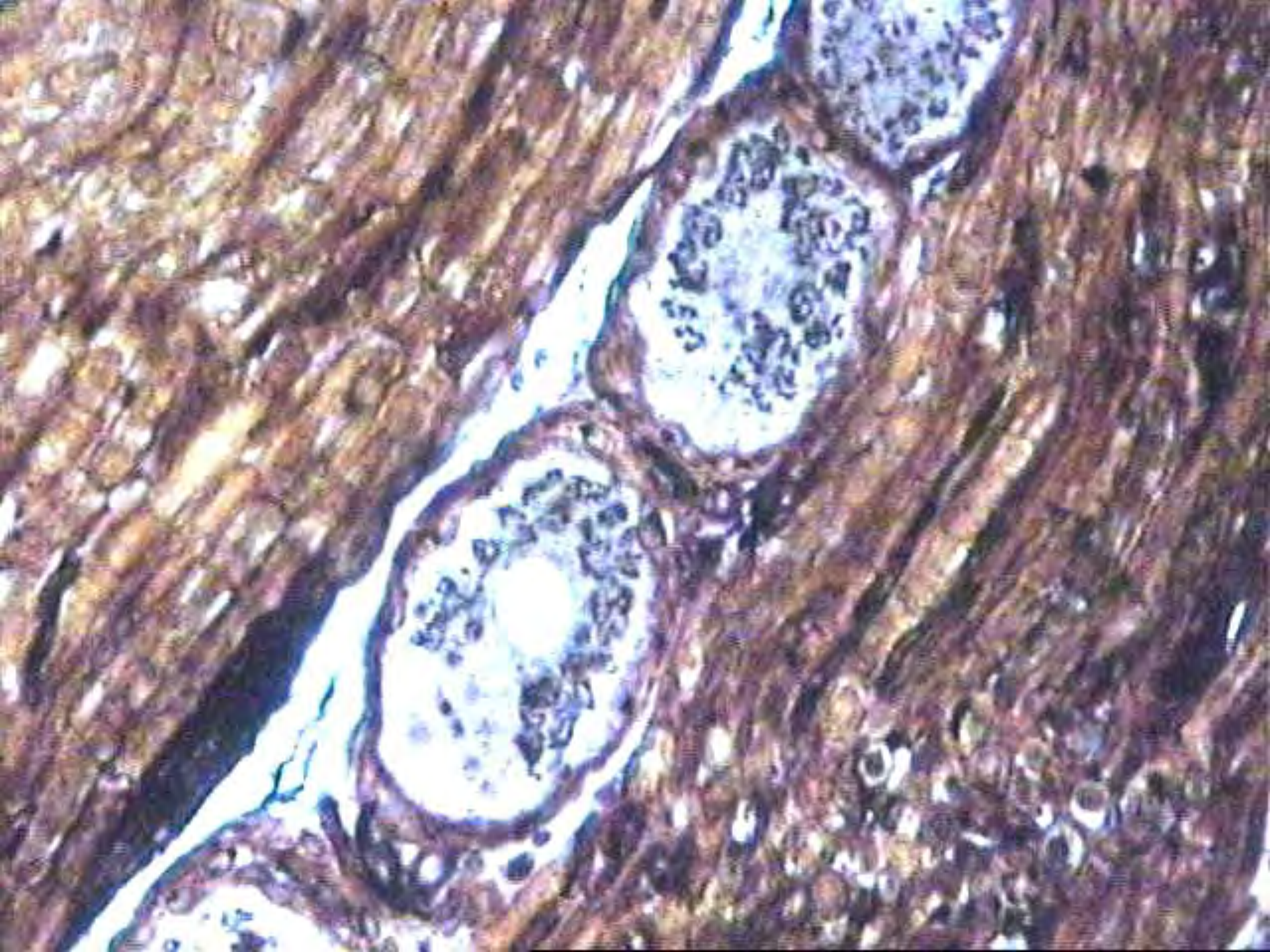


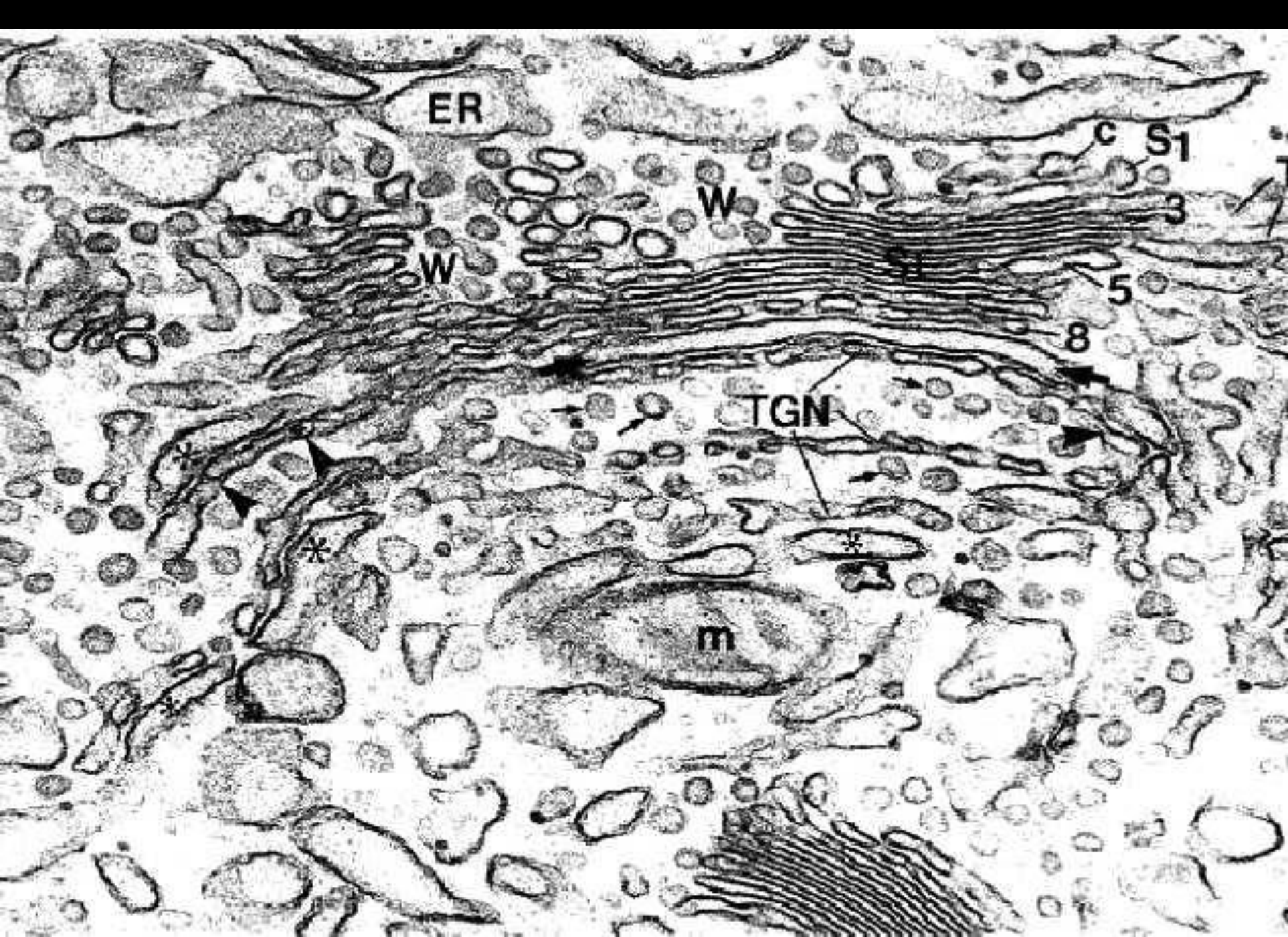


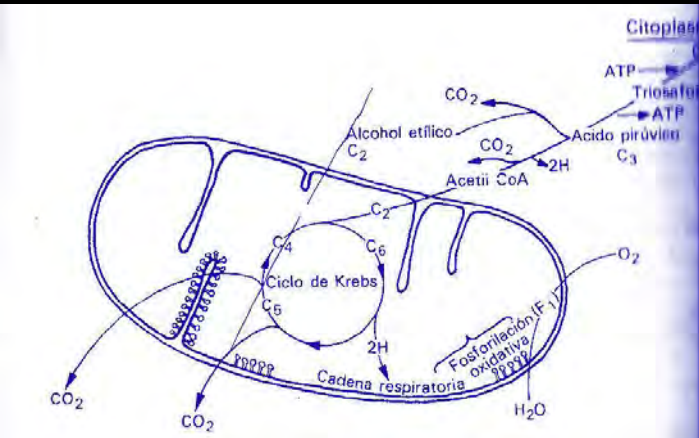
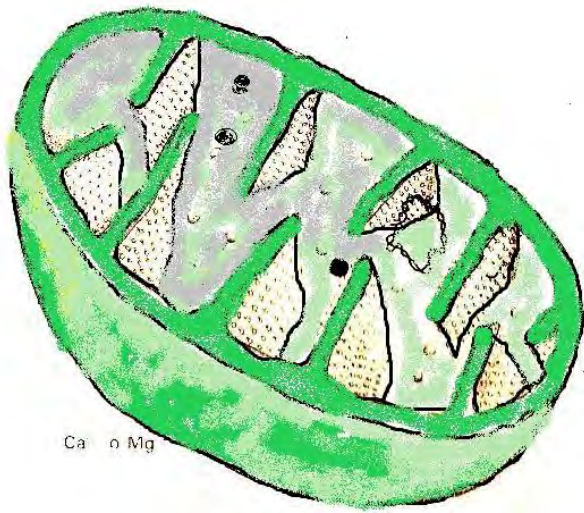


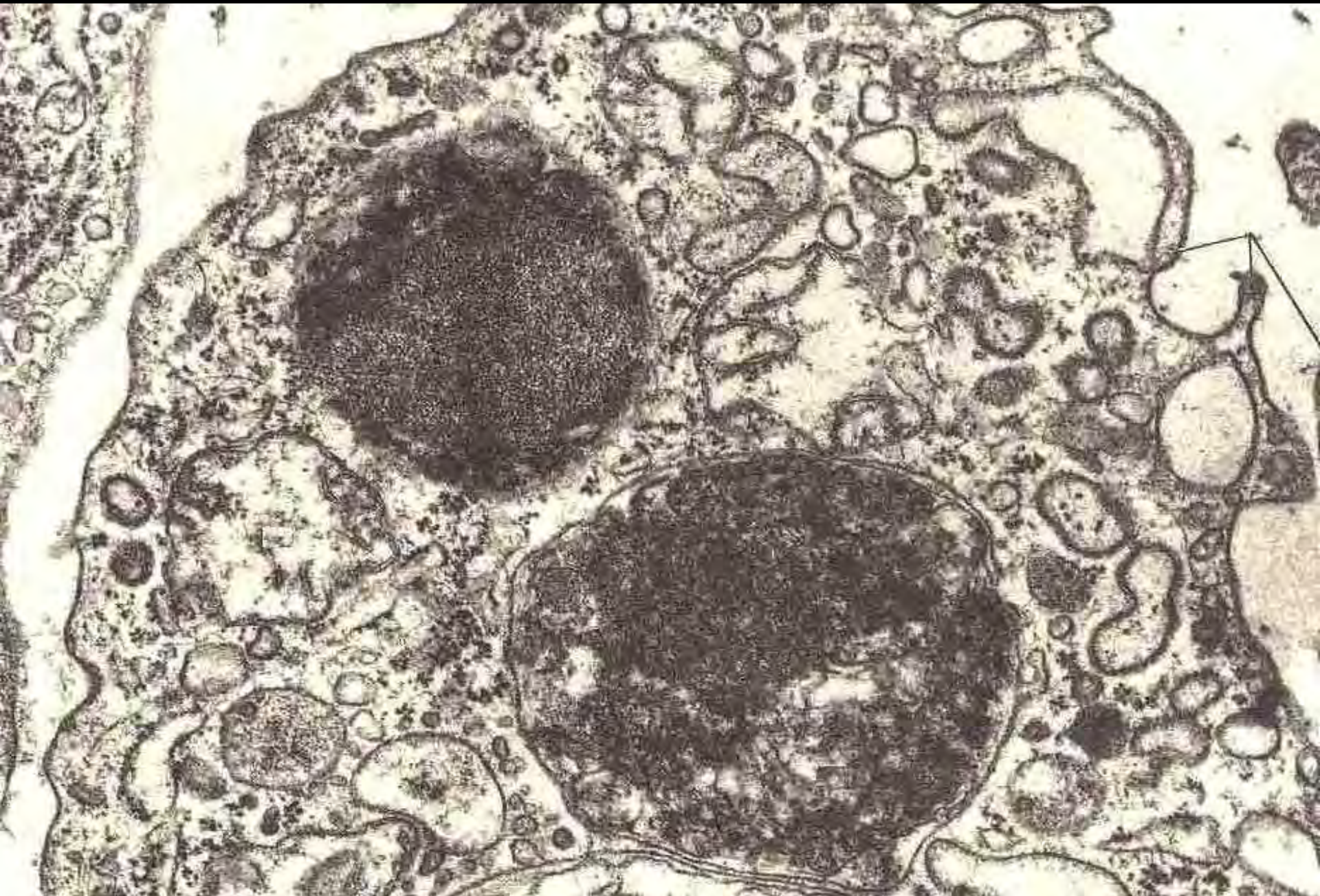


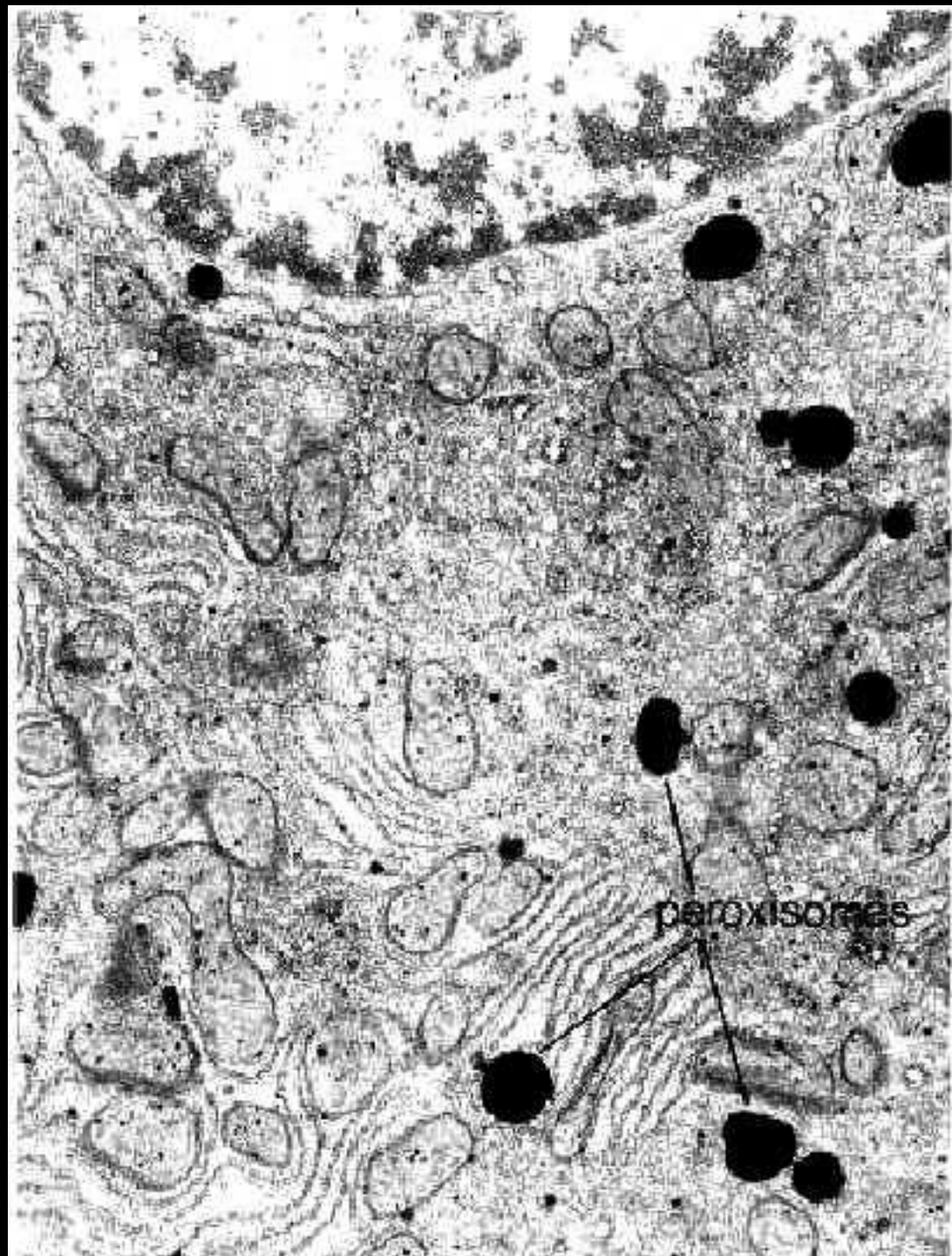
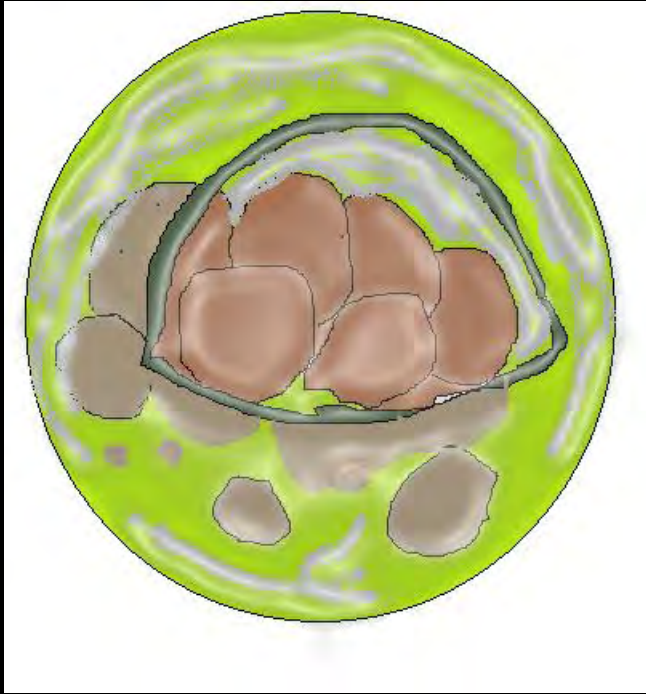




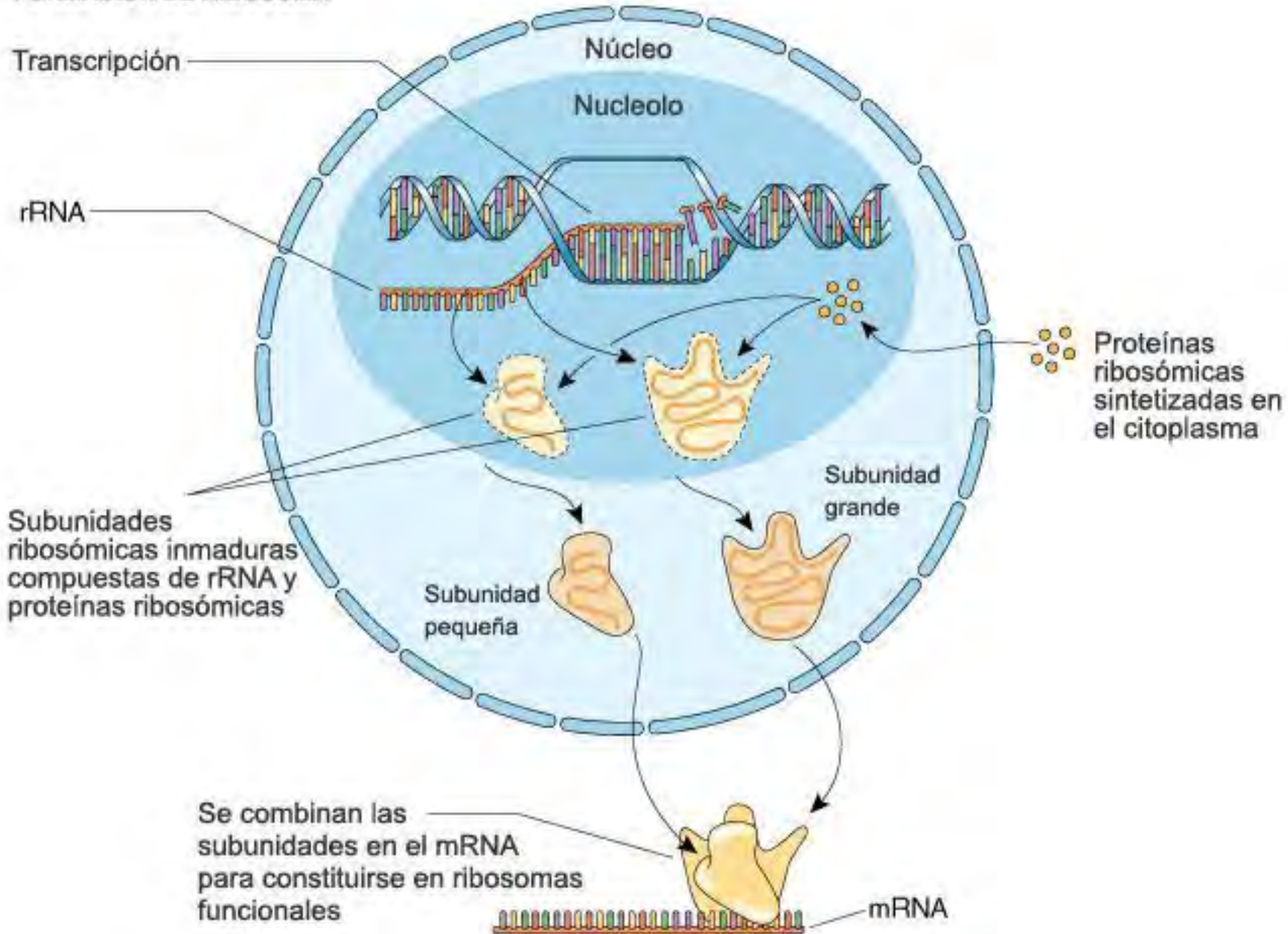


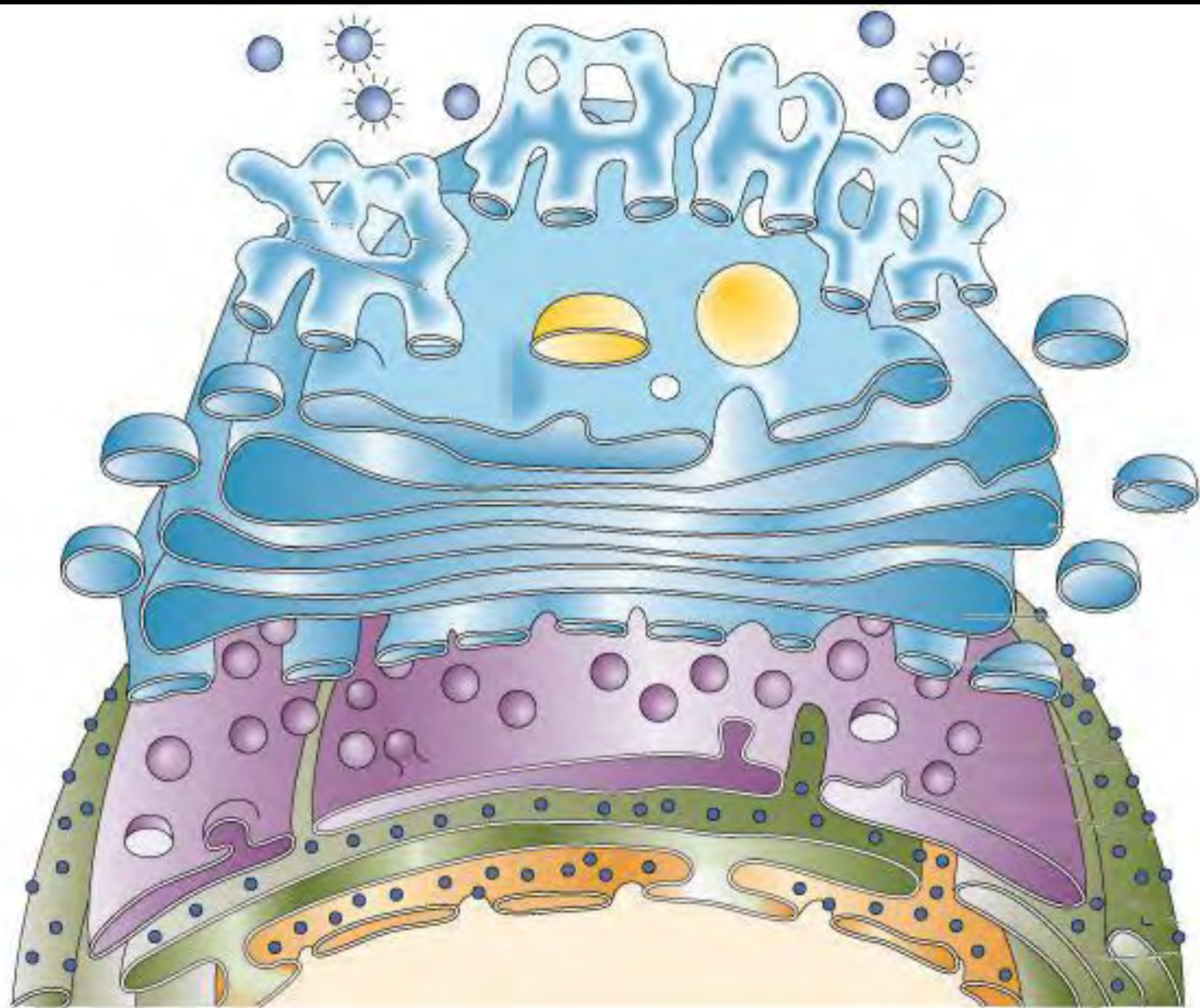




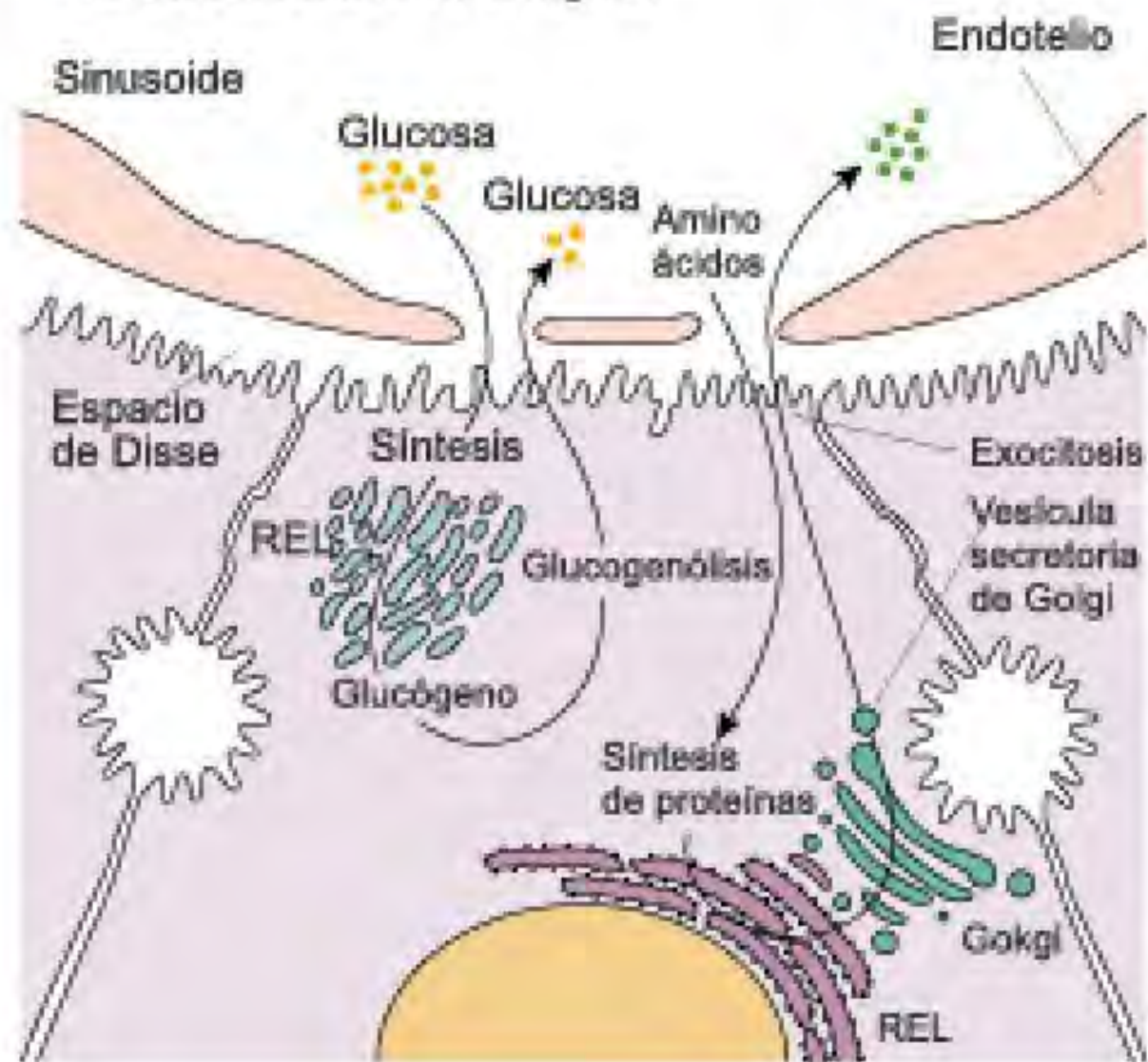


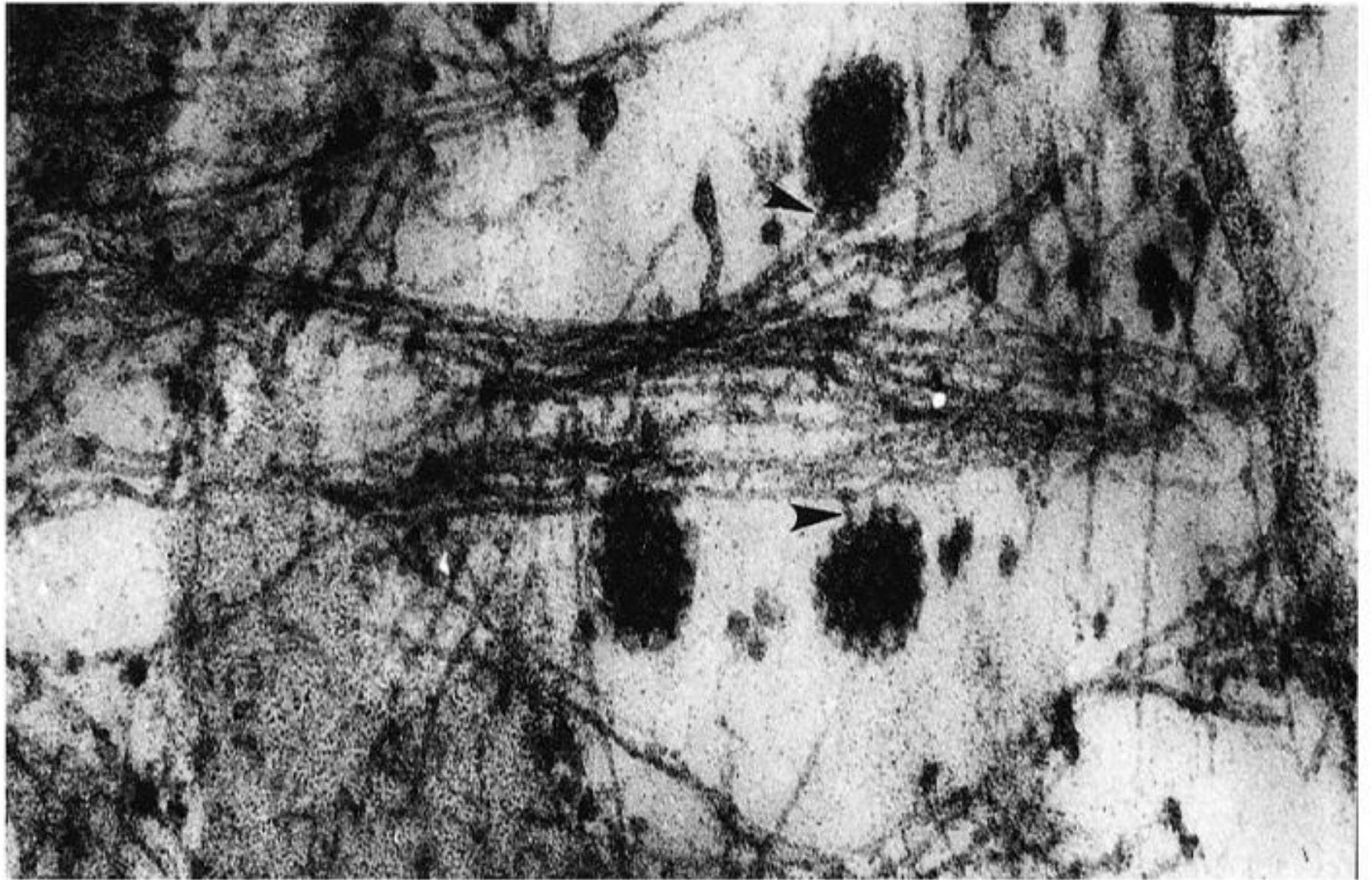
FORMACION DE RIBOSOMA



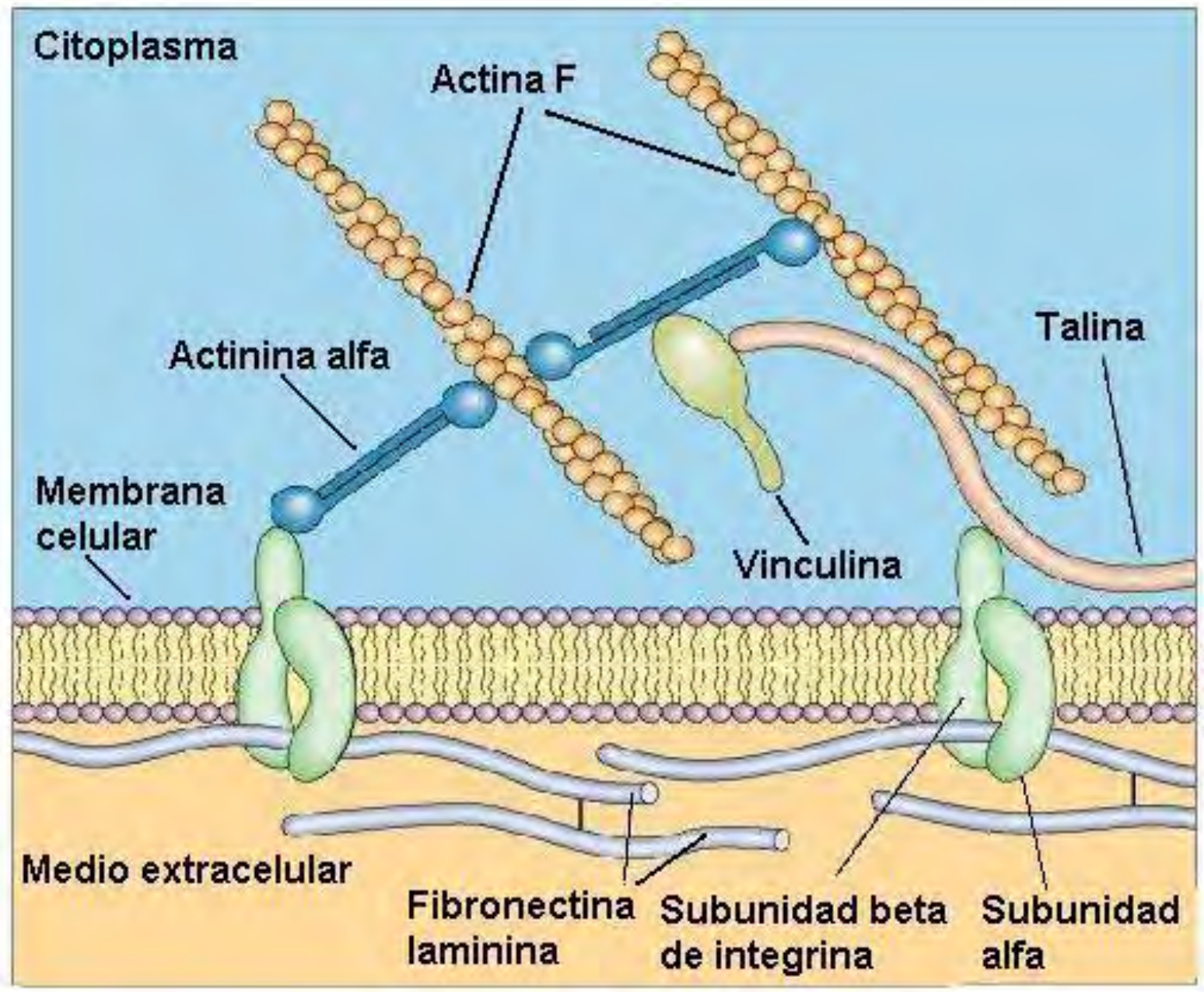


A Síntesis de proteínas y depósito de carbohidratos en el hígado





35000 X



Citoplasma

Actina F

Actinina alfa

Membrana celular

Vinculina

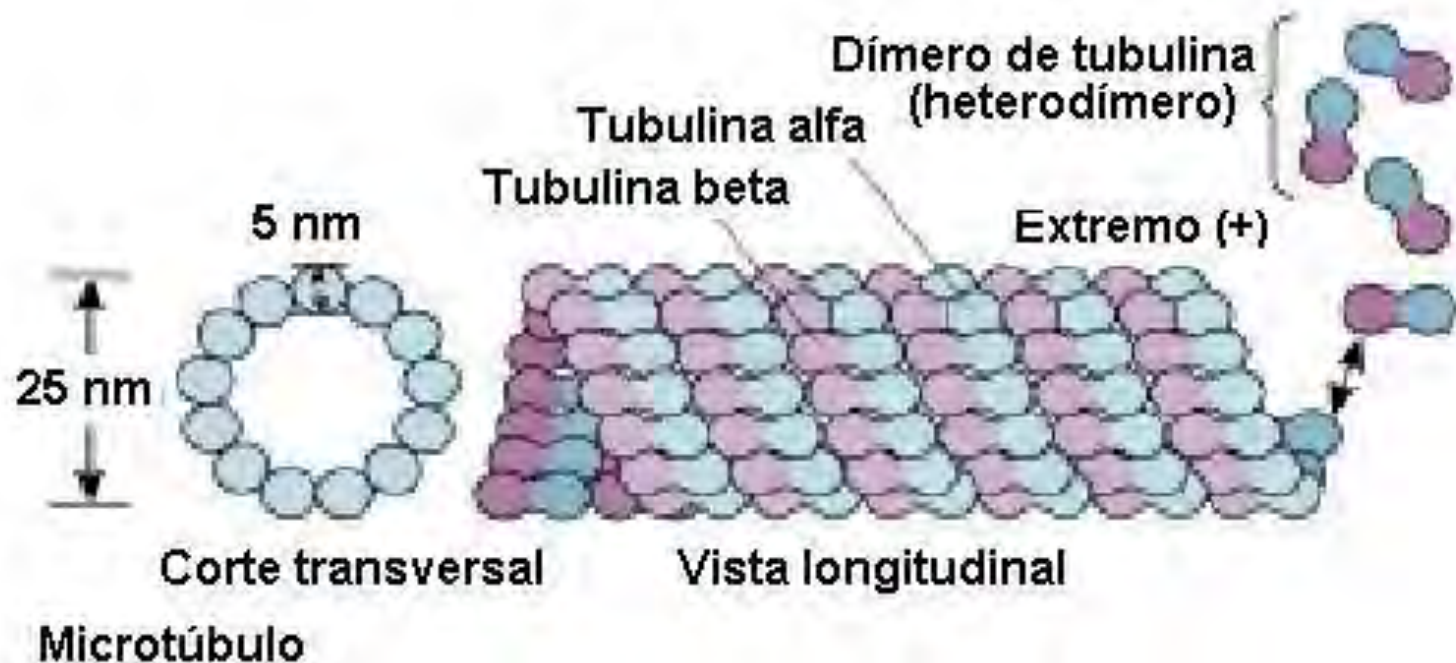
Talina

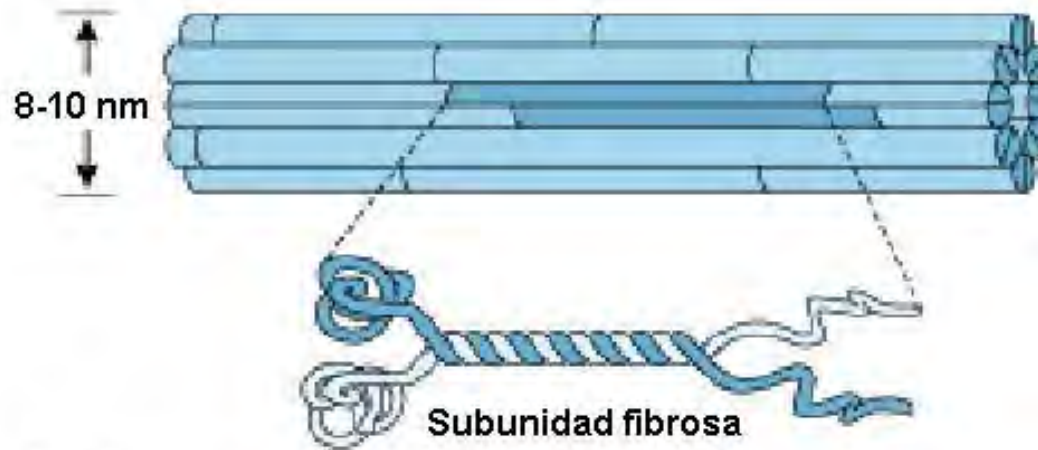
Medio extracelular

Fibronectina laminina

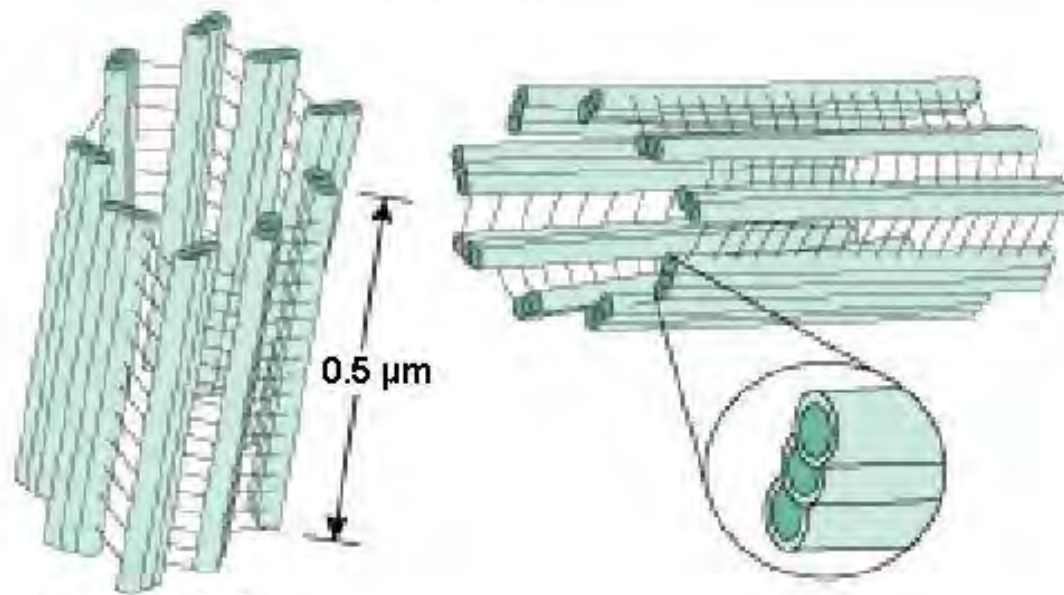
Subunidad beta de integrina

Subunidad alfa





A Filamentos intermedios



B Centriolo

**FILAMENTOS
INTERMEDIOS**

CITOQUERATINA (EPITELIOS)

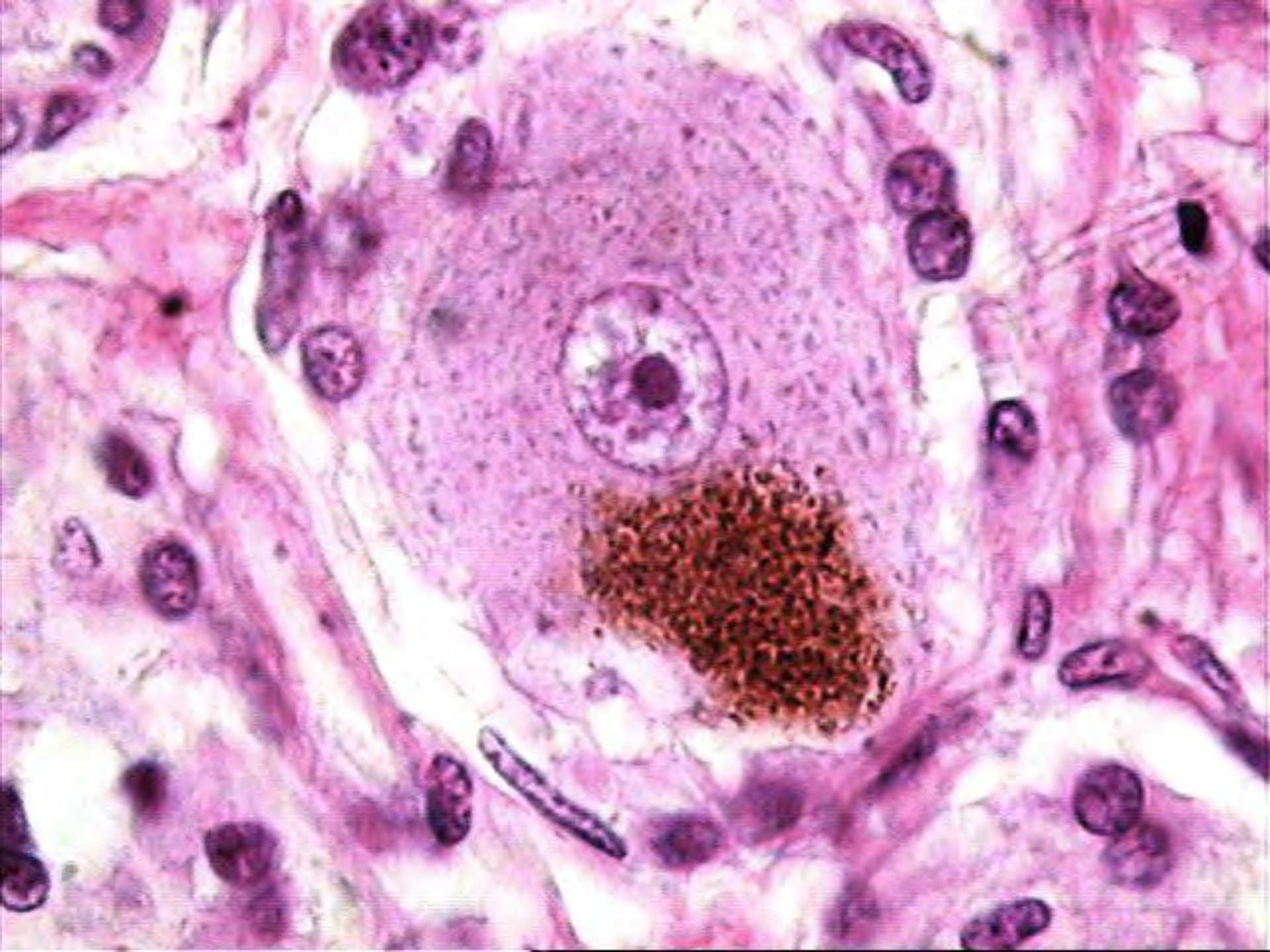
NEUROFILAMENTOS (NEURONAS)

DESMINA (MÚSCULO)

**PROTEÍNA ÁCIDA FIBRILAR (CÉLULAS
DE GLÍA)**

**VIMENTINA (CÉLULAS DE ORIGEN
MESENQUIMATOSO)**





MODELOS CELULARES

INDIFERENCIADA

SECRETORA

ABSORTIVA

FAGOCÍTICA

ALMACENAMIENTO

CONTRÁCTIL

NERVIOSA

PROTEÍNAS

GLUCOPROTEÍNAS

ESTEROIDES

IONES

LÍPIDOS

HEMOGLOBINA

GLUCÓGENO

PIGMENTOS

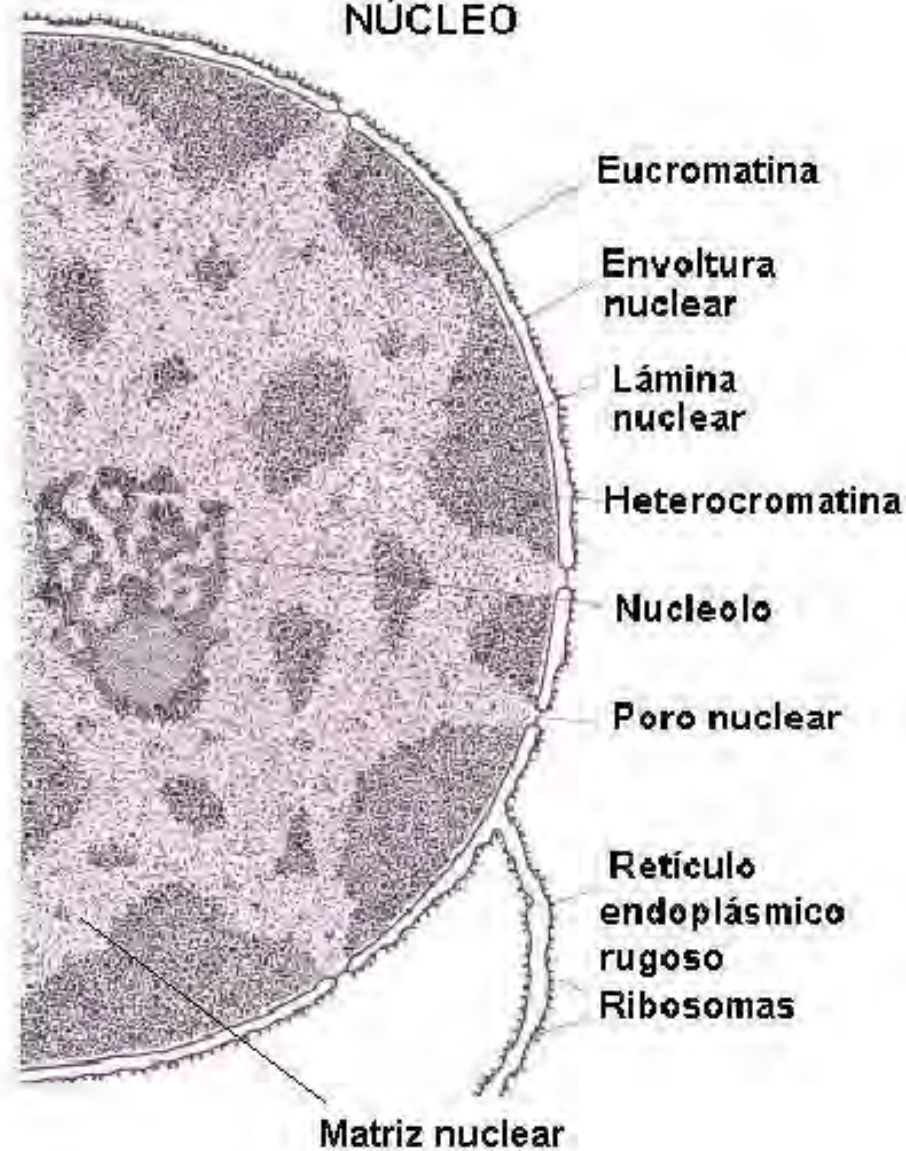
MUSCULARES

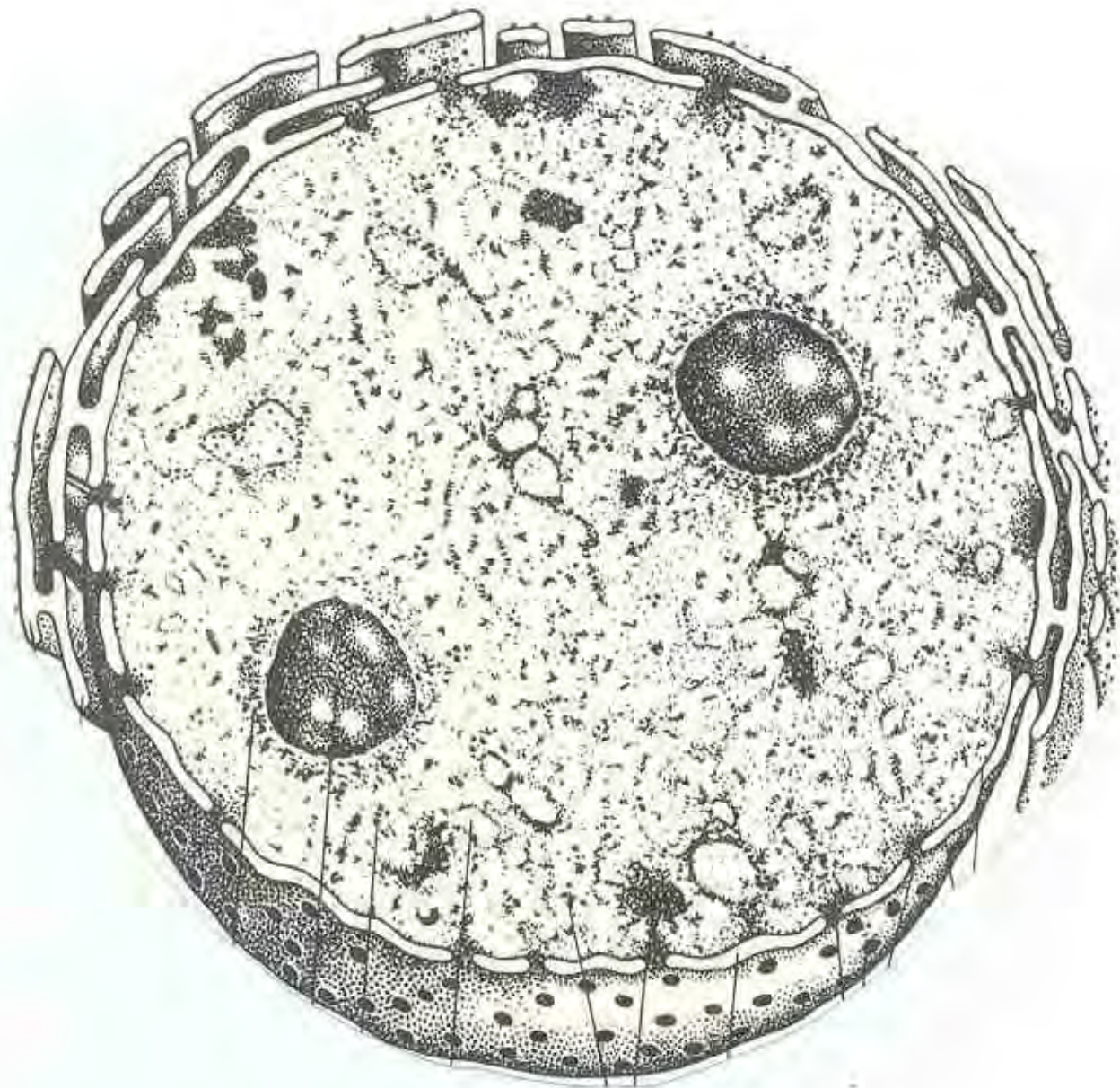
MIOEPITELIALES

PERICITOS

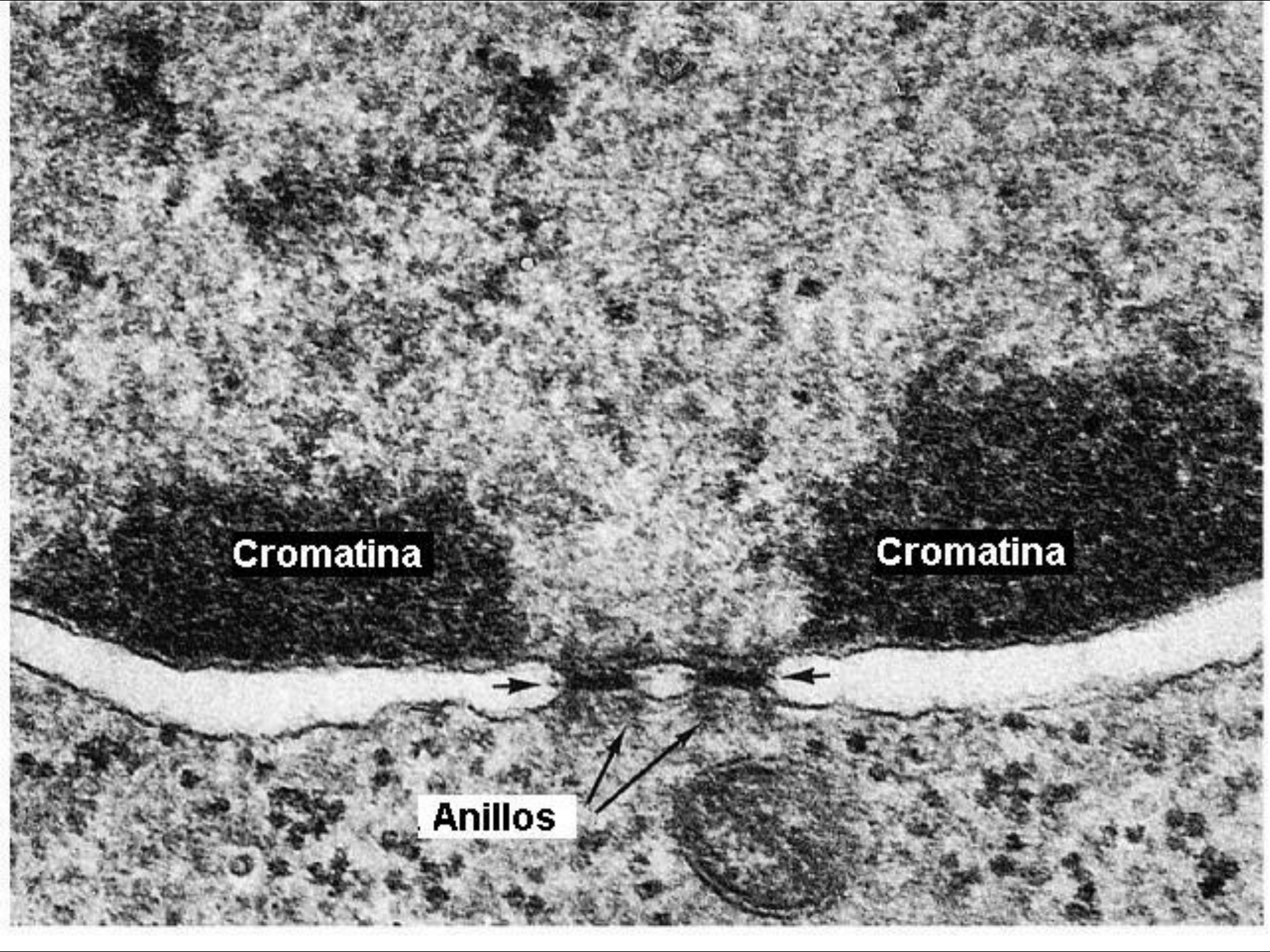
MIOFIBROBLASTOS

NÚCLEO









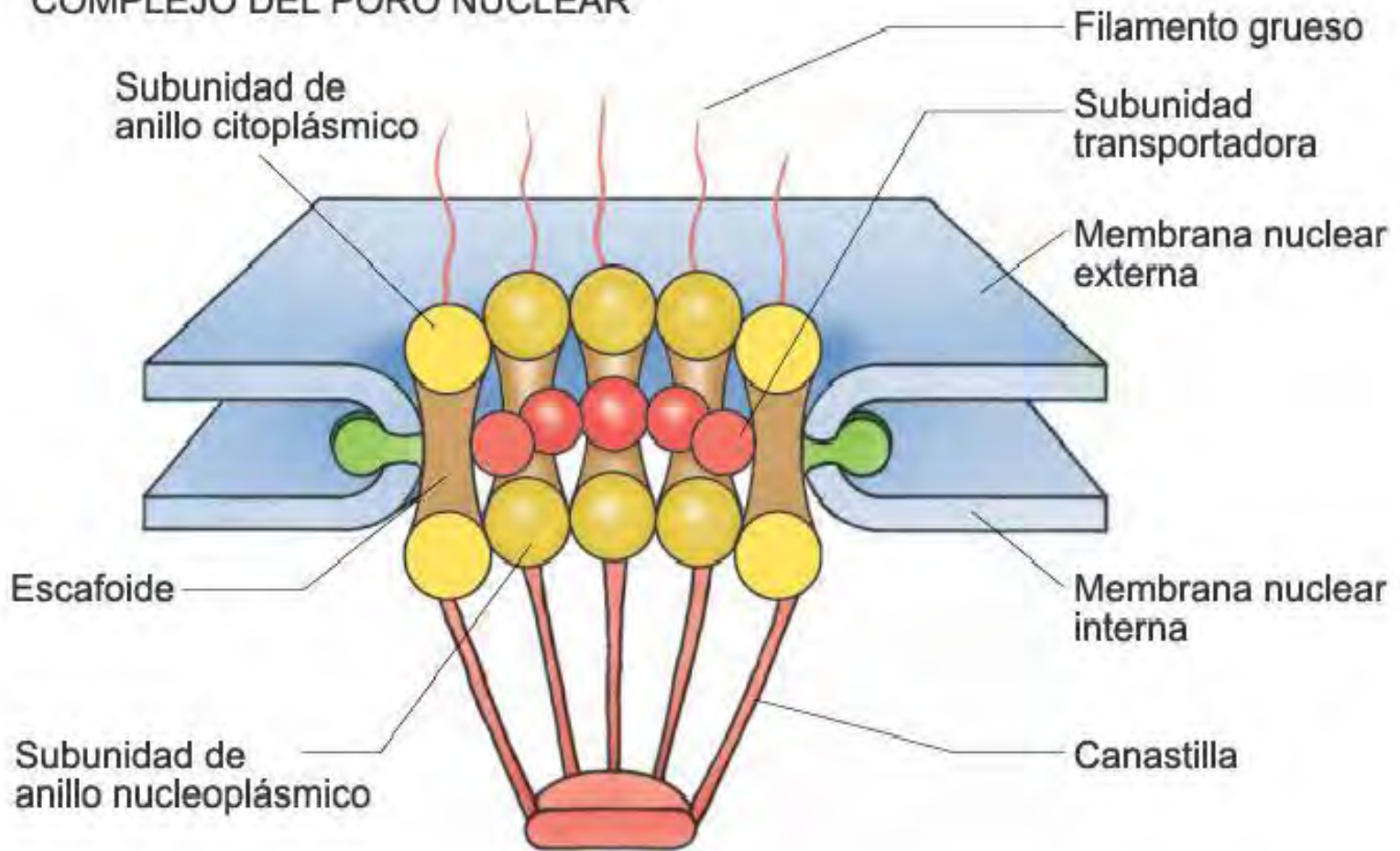
This electron micrograph shows a cross-section of chromatin. Two dark, electron-dense regions are labeled 'Cromatina'. Between these regions, a light-colored band is visible, with two arrows pointing to small, ring-like structures labeled 'Anillos'. The background is a granular, light-colored matrix.

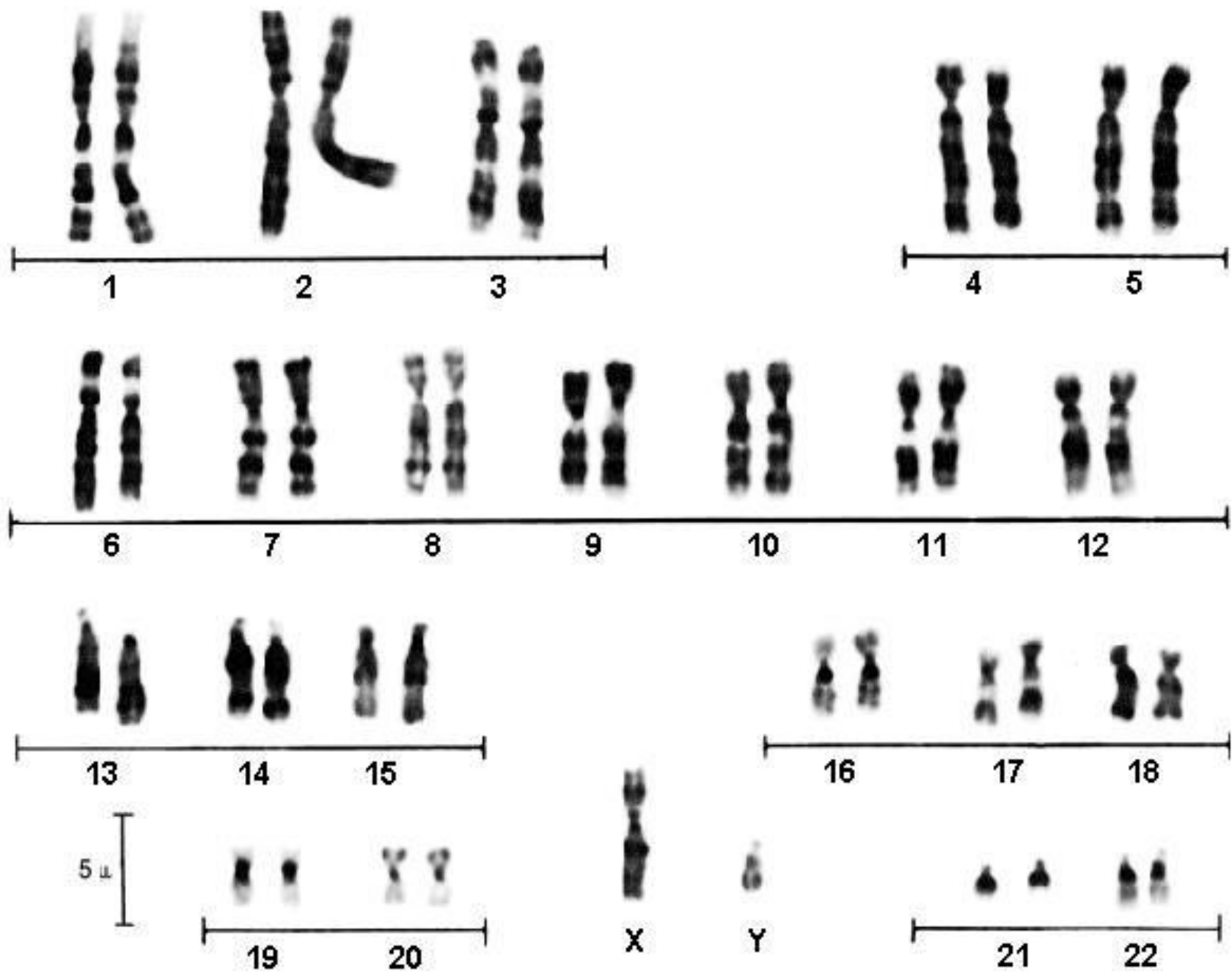
Cromatina

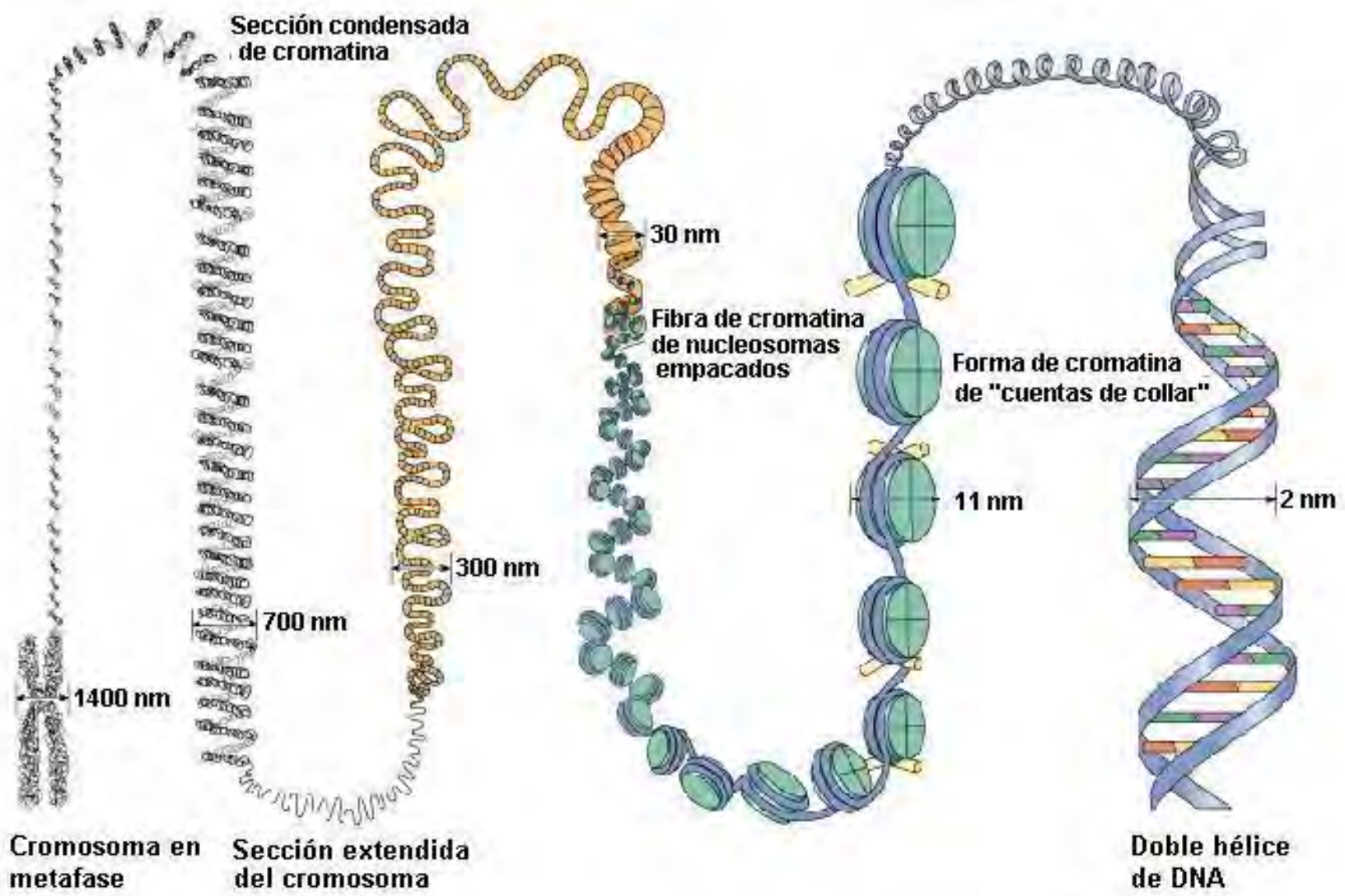
Cromatina

Anillos

COMPLEJO DEL PORO NUCLEAR





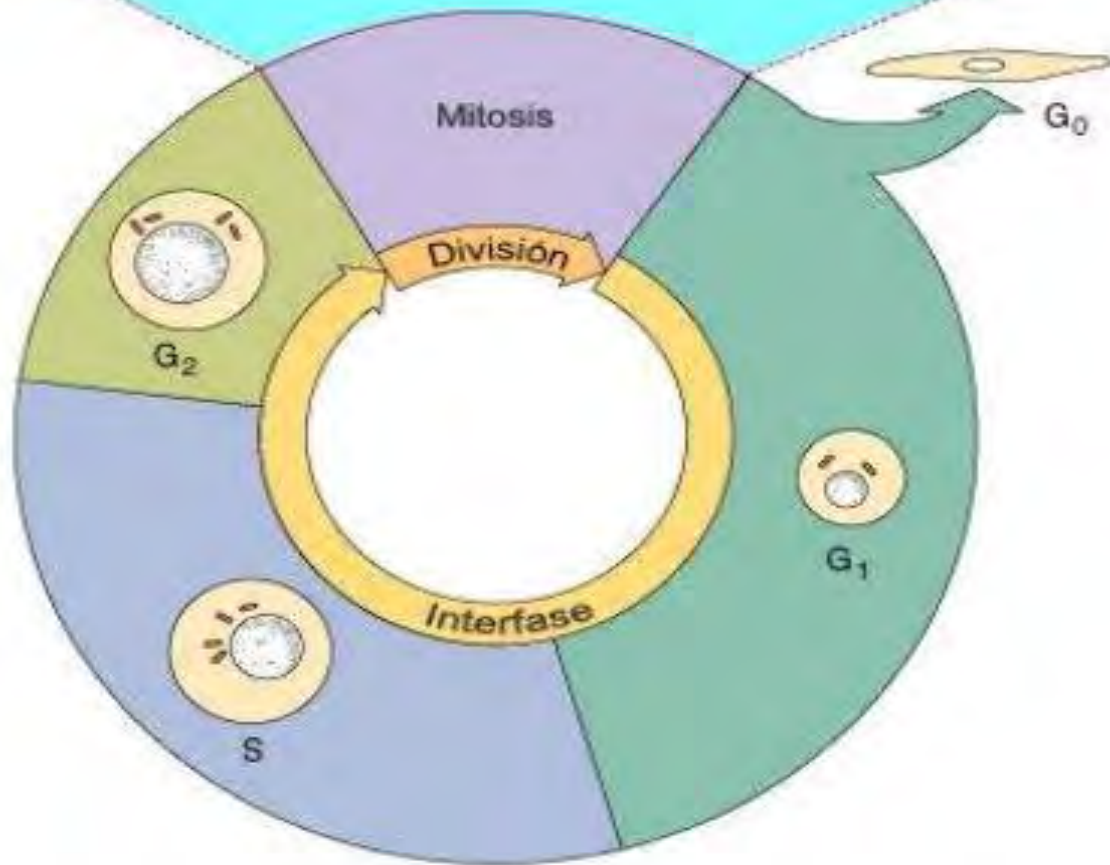
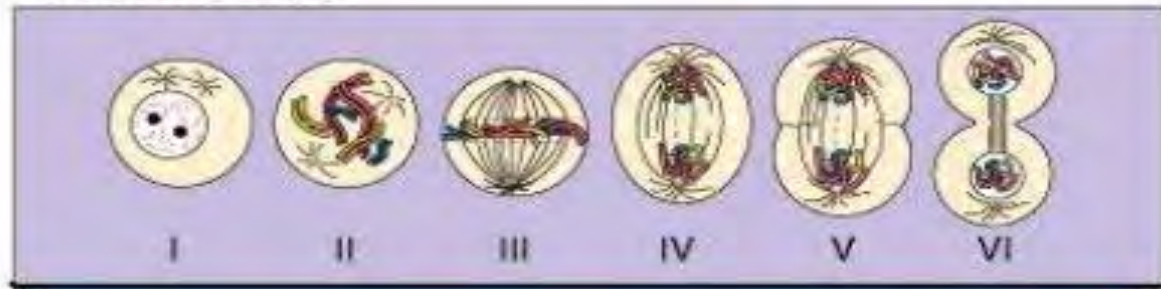


Cromosoma en metafase

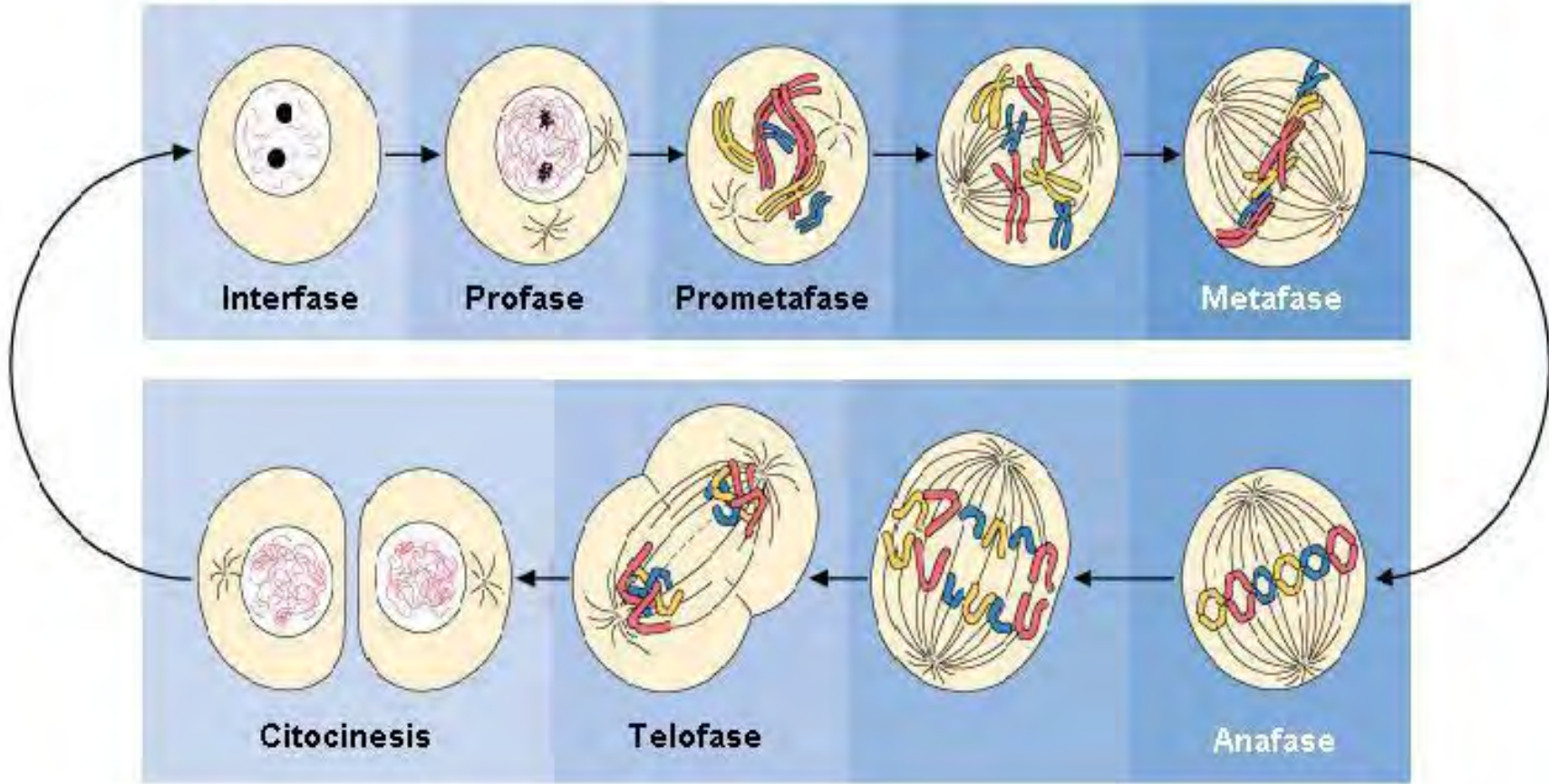
Sección extendida del cromosoma

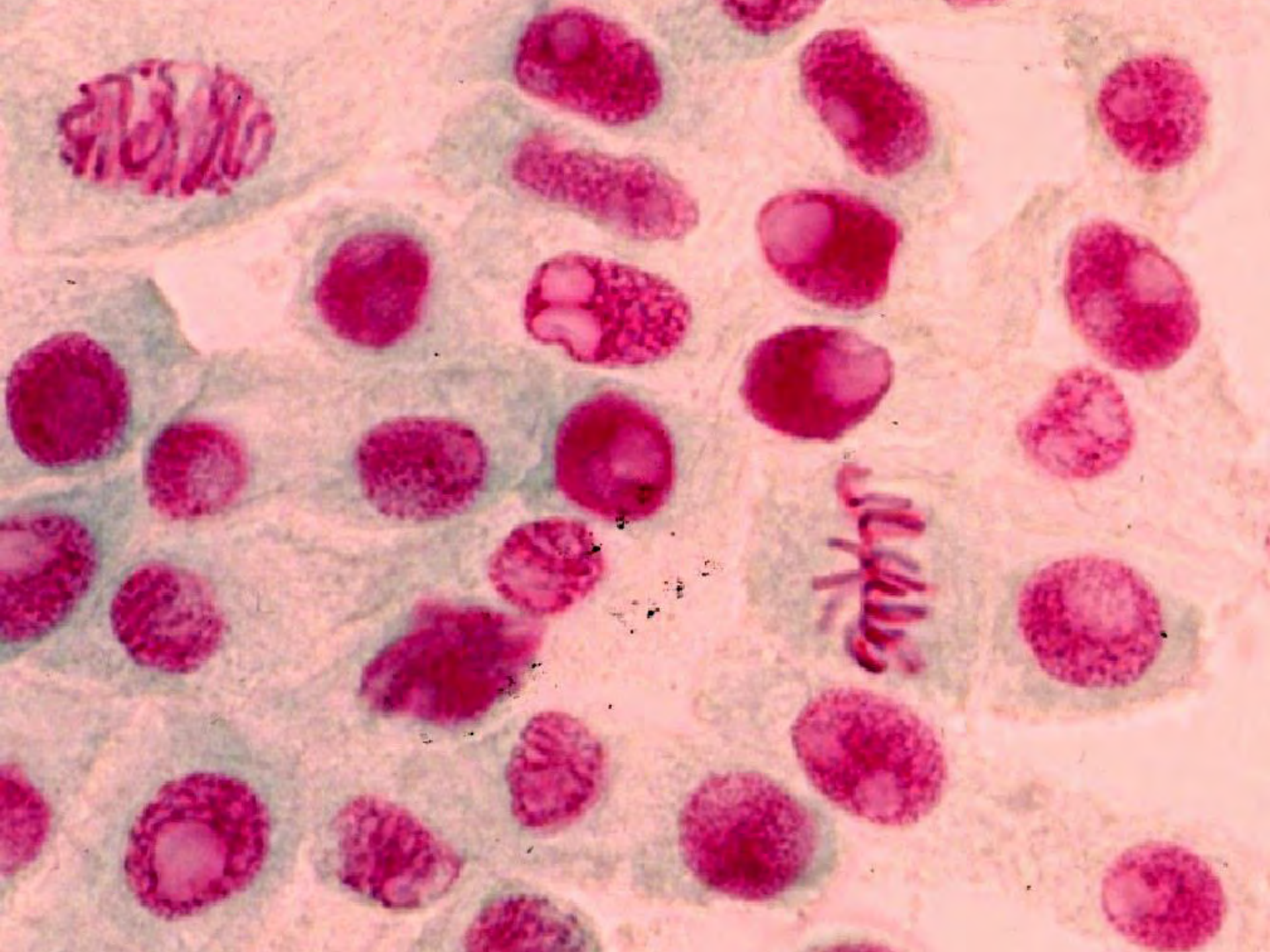
Doble hélice de DNA

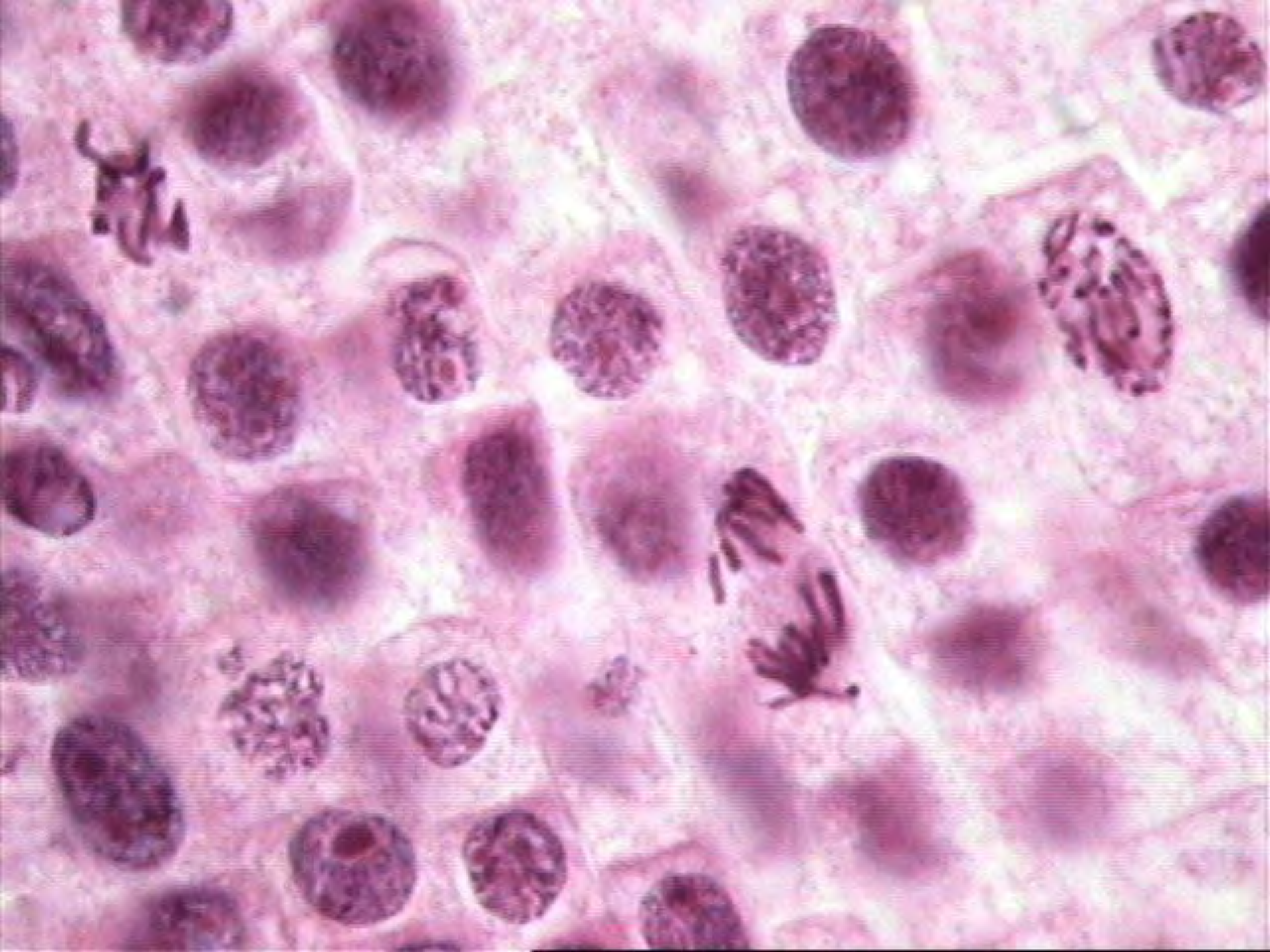
CICLO CELULAR

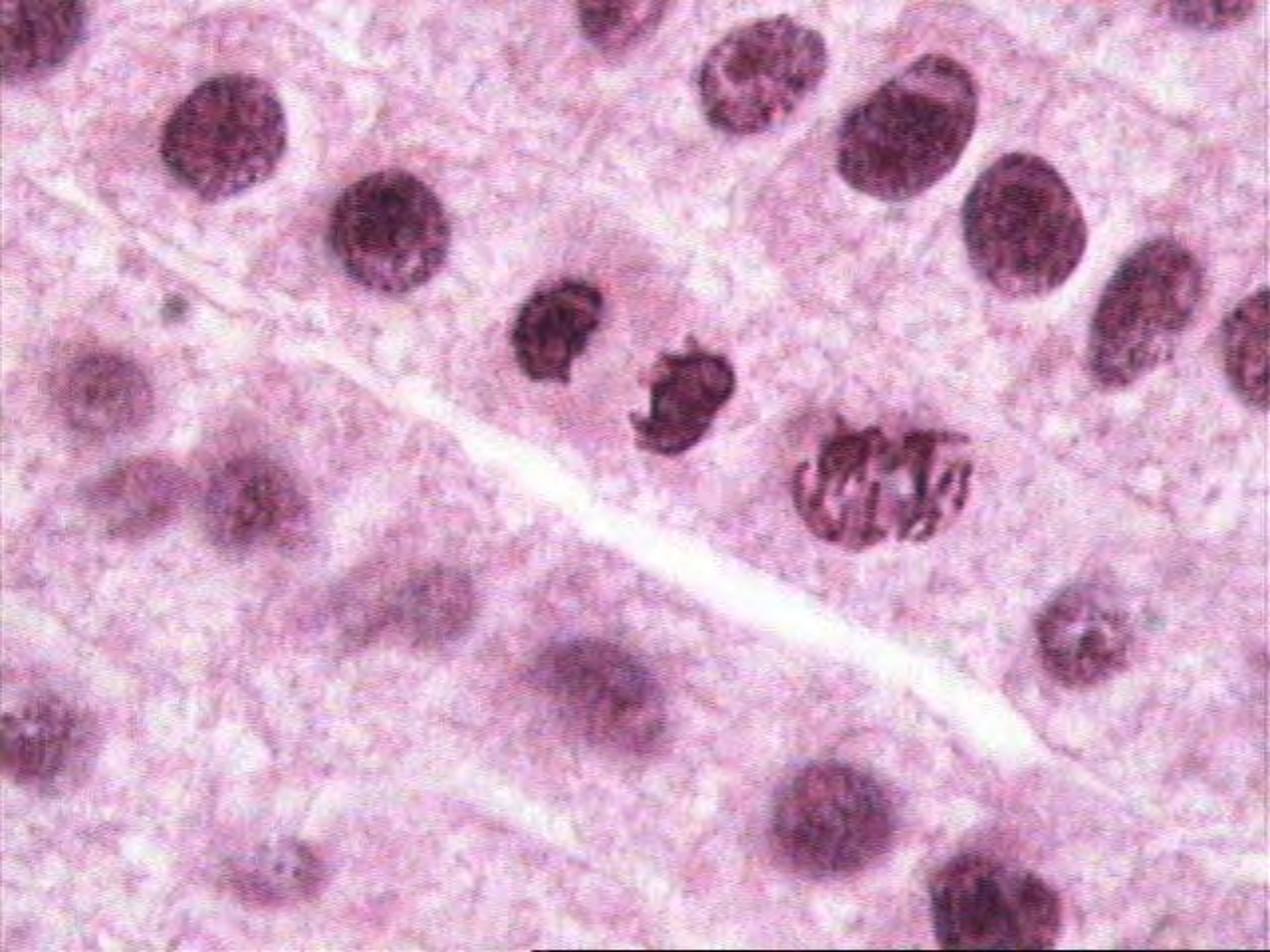


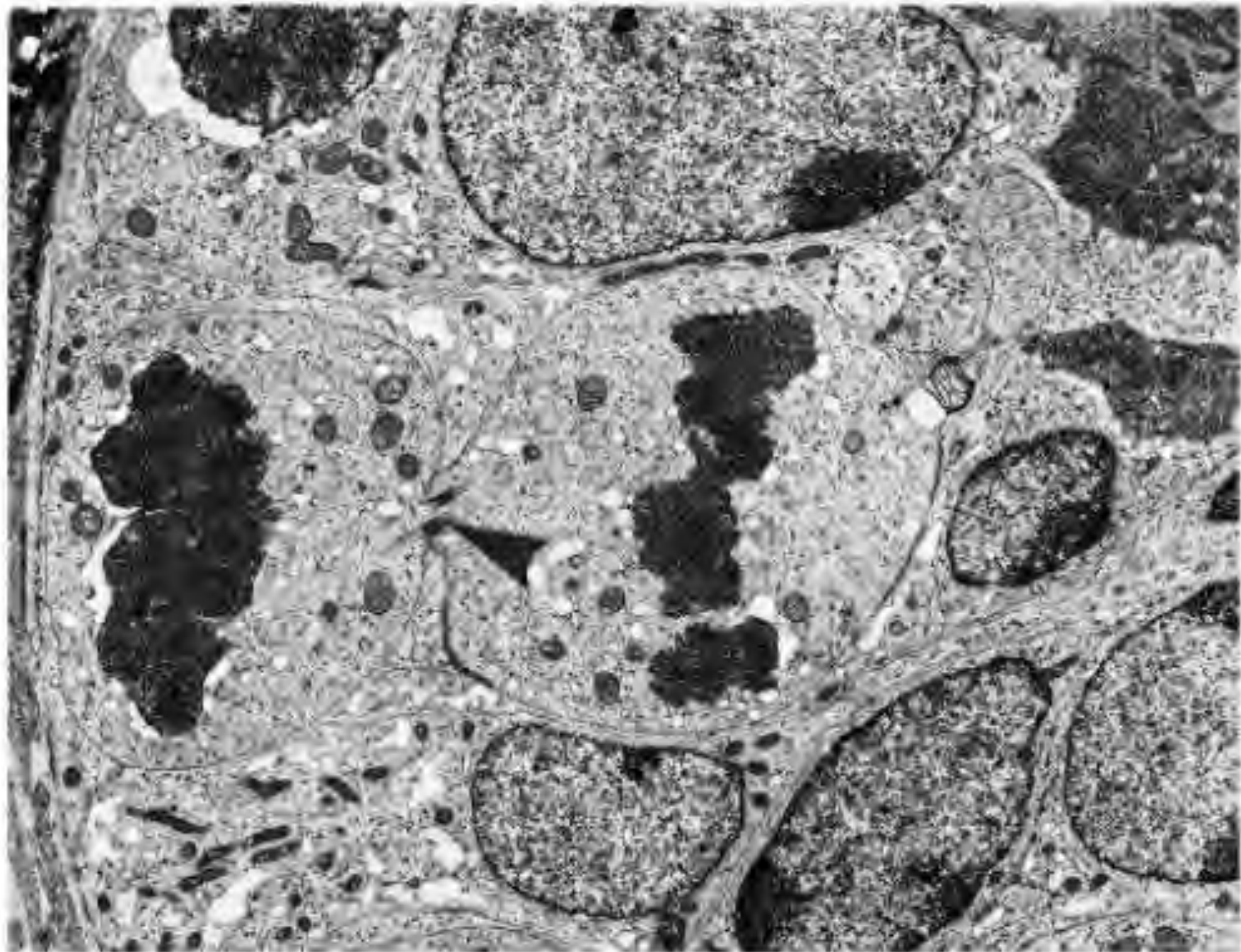
MITOSIS











BIBLIOGRAFÍA:

HISTOLOGÍA BÁSICA Junqueira y Carneiro

HISTOLOGÍA Autores cubanos CD

Material complementario CD

Guías Clases Taller CD

Laminario Virtual CD